



99



100



101



102



103



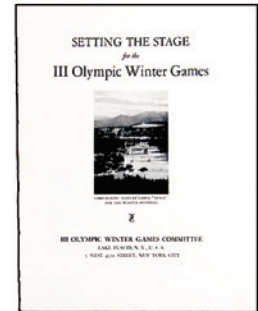
104



106



105



107

99. **Amsterdam 1928. Orange Color Glass Vase.** 12cm (4.7") high, made by Leerdam Glass Fabriek, designed by C. Kannegieter. Olympic 1928 Games legend and Amsterdam shield between ornate design. Very scarce vase in orange color. EF. (\$160)
100. **Amsterdam 1928. Fencing Ticket with #11 Stamp, f1.50.** Light brown, 10.5x6.5cm (4.1"x2.6"). Lt. center crease, abt. EF. (\$100)
101. **Olympic Congress in Berlin, 1930. Official Medal for Congress Participants.** Cast bronze, 95x88mm. Large rings over globe surrounded by Olympic motto and laurel wreath. Rev. Brandenburg Gate surrounded by Congress legend. *Berlin presented the bid for the 1936 Olympic Games.* Dark toning, EF. (\$160)
102. **First Soccer World Cup in Montevideo, 1930. Official Medal.** Bronze, 31mm. Stadium tower. Rev. Shield of Uruguay above 7-line legend: First soccer world cup in Montevideo 1930. With loop, toned EF. (\$100)
103. **LAKE PLACID, 3rd OLYMPIC WINTER GAMES, 1932 Participation Medal.** Bronze, 48x60mm, by Julio Kilenyi. Winged figure of Fame blowing horn, Olympic rings above, winter landscape in background. Rev. Six winter sports depicted on shields around legend in six lines, scenes of curling and dogsledding below. EF. (\$5,000)

104. **First Place Winner's Diploma Awarded to Johan Grøttumsbraaten of Norway for Skiing-Combined Event – 18km Ski Race and Jumping.** 35.5x25.2cm (14"x10"), by American Bank Note Co. Ltd. Award legend between winner's medal, light green outlines of participation medal behind text. Signed in ink by OC President G. Dewey and IOC President Baillet-Latour. *Johan made his final Olympic appearance in Lake Placid. He had won the same event in St. Moritz 1928 with a gold medal, and in his first Olympics in Chamonix he won a bronze medal. In Cross Country 18km he won gold in 1928, silver in 1924, and bronze in 50km in Chamonix.* EF. (\$2,000)
105. **Group of 3 Tickets:** Blue Celluloid Season Ticket for \$45, and Pair of February 10 Afternoon and Evening Green Cardboard Tickets. All 9.5x6cm (3.7"x2.4"). \$45 ticket EF, 2 green cardboard tickets VF. (3 pcs.) (\$160)
106. **Group of 4 Celluloid Season Tickets, February 4-13, 1932.** Green Standing Room Season Ticket, \$15 (2) and Red Grand Stand, \$30 (2), 9.3x5.8cm each All EF. (4 pcs.) (\$100)
107. **(Brochure) Lake Placid 1932. First Preliminary Information Brochure:** "Setting the Stage for the III Olympic Winter Games". 16 pages, illustrated in b&w, 18x23cm (7.1"x9.1"), with parchment cover and mailing envelope. Rare. EF. (\$120)





108



109



109



110



111



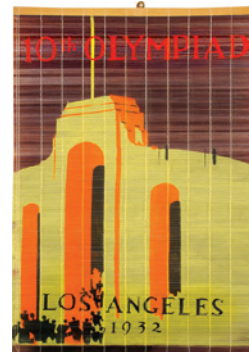
114



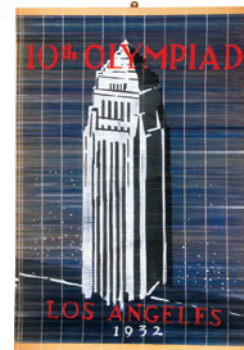
112



113



115



**LOS ANGELES, 10th OLYMPIC GAMES, 1932**

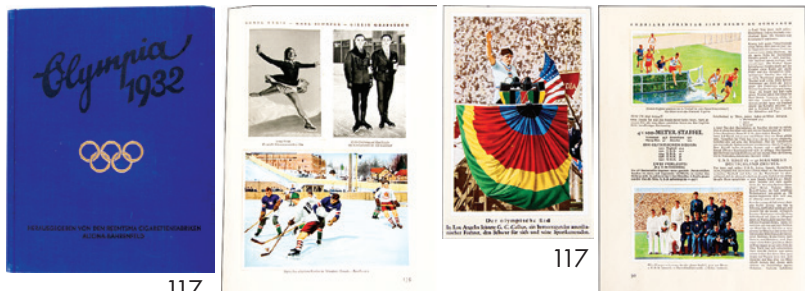
- 108. **Los Angeles 1932. Cased Participation Medal.** Bronze, 60mm, by Julio Kilenyi. Standing athlete carrying unfurled banner of the Xth Olympiad. Rev. Two seated female figures supporting shield of the United States. Toned EF. (\$700)
- 109. **Los Angeles 1932. Long Beach Dedication of Olympic Venue Badges.** Goldplated, 32mm, scalloped edge, made by Dodge Jewelers, Los Angeles. Winged American enamelled shield, "July 23, 1932" below. With tricolor ribbon, in presentation box. EF. Plus a Second Badge, frayed ribbon, no box. A Third Badge, EF, with frayed ribbon, in bronze. (3 pcs.) (\$180)
- 110. **Charles Lindbergh Medal Exhibited in the Los Angeles 1932 Olympic Art Exhibition.** Gilt bronze, 72mm, by Frederic MacMonnies. Bust half l. of aviator crossing the Atlantic. Rev. Lindbergh's plane, the Lone Eagle, surrounded by Death, Storm and Thunder. SOM issue #4. MacMonnies was awarded Second Prize in the Medals and Relief's Section of the Art Competition and Exhibition for this Lindbergh medal. No First Prize was awarded. Lt. wear on obv. high points, abt. EF/EF. (\$180)
- 111. **Trio of Los Angeles 1932 Movie Stars Deck of Cards.** B&W movie star cards, poster logo in color on back, 56x87mm. "Call to the Olympic Games" color poster on back, the front features movie stars, flags of participating nations, the Olympic stadium and other Olympic venues. In pictorial boxes. All VF-EF. (3 pcs.) (\$140)

- 112. **Commemorative Los Angeles Xth Olympiad Fan.** Cardboard, 15x27.5cm (5.9"x10.8"), made by Pacific Coast Calendar Blotter Co., Los Angeles. Legend. Rev. A colorful landscape with river and mountains. The fan was sold by disabled veterans for Ex-Service Men. A few creases, VF-EF. (\$100)
- 113. **Commemorative Paper Parasol.** Multicolor, 49.5cm (19.5"), made in Japan. Displayed are color Olympic rings and "Olympic Games 1932 Los Angeles" legend. A few small tears, VF+. (\$120)
- 114. **Olympic Games 1932 Discus Thrower Wall Hanging.** Large blue felt, 27.5x49.5cm (10.8"x14.5"), made by Hollywood Felt Co., Los Angeles. Large discus thrower between Los Angeles 1932 legend. With wooden rod at top, and yellow tassels at bottom. Color on front somewhat faded, VF. (\$140)
- 115. **Los Angeles 1932. Trio of Commemorative Wall Hangings of Los Angeles Landmarks.** Multicolor, handpainted, 36.5x5x53.5cm (14.4"x20.8"). Included are the Olympic Bell with LA 1932 logo; the Entry to the Olympic Coliseum Stadium; and the Los Angeles City Hall. Nice souvenirs. All EF. (3 pcs.) (\$160)





116



117



118



119



120



121



122



123



124



125



126

116. Los Angeles 1932. Olympic Stadium Pass in Leather Cover, Full Opening and Closing Tickets. Plus Gymnastics ticket, August 10, and Swimming Ticket, August 8. Tickets 11x6.7cm to 14x6.7cm (4.3"x2.6" to 5.5"x2.6"). All EF. (5 pcs.) (\$240)
117. German Cigarette Card Album about The Olympic Games in Los Angeles, and the Olympic Winter Games in Lake Placid, 1932. Blue linen with gold Olympic rings, 24.5x31cm (9.6"x12.2"), 144 pages, in German. 123 black and white and 75 color pasted-in cards plus 10 full-page b&w plates. Report on all summer and winter 1932 events, with results. EF. (\$120)

**GARMISCH-PARTENKIRCHEN,  
4th OLYMPIC WINTER GAMES, 1936**

118. Silver Participation Medal. Silverplated bronze, 60mm, by M. Joerres. Alpine summit over Olympic rings within German legend. Rev. Olympic motto over fir branches. Presented to high officials. Very rare. EF. (\$1,500)
119. Participation Medal. Bronze, 60mm, by M. Joerres. Alpine summit over Olympic rings within German legend. Rev. Olympic motto over fir branches. Toned EF. (\$750)
120. Garmisch-Partenkirchen Winter. Olympic Games Press Badge. Silvered, multicolor enamel, 27mm, with green rosette, 39mm. Numbered on back. Elbel W-9. EF. (\$500)
121. Garmisch-Partenkirchen 1936 Winter Visitor's Pin. Silvered, partially enamelled, 35mm. Official logo featuring the Alpspitze Mountain. EF. (\$100)
122. Official Car Plaque. Silvered, multicolor enamel, 9cm (3.5"). Kreuzeck mountain with Olympic rings surrounded by Olympic Games legend. EF. (\$120)

123. Official Daily Program, February 7, 1936. 33 pages with 3 photos of venues, 14x25.5cm (5.5"x10"), in German, French and English. Events were Downhill Race for women and men, and 7 Ice Hockey Games for 14 nations between 9am and 9pm. VF-EF. (\$80)
124. Official Daily Program, February 12, 1936. Brown covers, 49pp. illus., 13.6x20.6cm (5.4"x8.1"), in 3 languages. Ladies figure skating, ice hockey, 5000m speed skating won by Ivar Ballangrud, Norway; 4-Man Bobsled won by Swiss team. Covers abt. EF, contents EF. (\$120)
125. Pair of Silk Tickets: Bobsled, February 8, 1936. Multicolor silk, 45x60mm, triangular shaped. And Silk Men's and Women's Downhill Skiing Ticket. 35x55mm. Both with brass top inscribed legend. Both EF. (2 pcs.) (\$200)
126. (Book) Karl Schäfer. Mein Eiskunstlaufen im Lebenden Bilde. My Ice Skating in Live Pictures. Vienna, 1937. 66 pages of detailed descriptions of his compulsory skating, plus 24 illustrated photo sequences, 12.8x18.5cm (5"x7.3"). Very unusual, and helpful book for skaters! Housed in blue linen box. EF. (\$140)





**BERLIN, 11th OLYMPIC GAMES, 1936**

127. **Berlin 1936. Official Torch.** Steel, 27cm high (10.5"), made by Krupp Factory, designed by Carl Diem. Route of torch run from Olympia to Berlin on shaft, legend on top. Carried during the first Olympic torch relay from Olympia, Greece to Berlin, a distance of 3,307 km in 12 days. EF. **(\$5,000)**
- 127a. **Berlin Torch Remade by Original Maker Krupp in 1972 for the Munich Olympic Games.** Steel, 27cm (10.5"). The holder features the Olympic Eagle over Berlin legend, torch relay route below from Olympia to Berlin. The torch was presented to dignitaries at the Munich Olympic Games. EF. **(\$800)**
128. **Berlin 1936. Oberleitung Stab Badge.** Highest Management Team Badge (translated). Silvered, 42x44mm, made by Lauer. Olympic rings above Brandenburg Gate inscribed "XI. Olympiade/Berlin 1936". Suspended from "Stab" ("Staff") badge and green ribbon. Very scarce. EF. **(\$1,800)**

129. **Berlin 1936. Participation Medal Housed in its Presentation Case.** Cast bronze, 70mm, by Otto Placzek. Five athletes representing the five continents, pulling the ropes of the Olympic Bell. Rev. Olympic Bell embossed with German Eagle holding Olympic rings, within five concentric circles. Housed in red cardboard box with gold bell on top, lt. scuffing. Medal toned EF. **(\$300)**
130. **Berlin 1936. Participation Medal.** Cast bronze, 70mm, by Otto Placzek. Five athletes representing the five continents, pulling the ropes of the Olympic Bell. Rev. Olympic Bell embossed with German Eagle holding Olympic rings, within five concentric circles. Original dark brown and green toning. EF. **(\$260)**
131. **Berlin 1936. Olympic Cycling Medal.** Cast bronze, 70mm, by Otto Placzek. Raised Olympic bell. Rev. Olympic rings emitting rays, Cycling Star Tour inscription above. Official report page 1157. Uneven toning, EF. **(\$140)**
132. **Berlin 1936. Official Badge for Winners in Previous Olympic Games.** Silvered and white enamel, 27x33mm. Winner holding up torch, color rings at top. Below are 2 white enamelled lines for the winners' names. Pin closure replaced on back. VF-EF. **(\$120)**
133. **Berlin 1936. Participant's Pin Presented by the IOC.** Goldplated, 13x15mm. Housed in its white wallet. Presented by the IOC in the late 1980s. EF. **(\$100)**
134. **Kiel Olympic Yachting Visitor's Pin.** Silvered, blue enamel, 31mm. Sailing boats between Olympic rings and fish, "Kiel 1936" on side. EF. **(\$100)**
135. **Berlin 1936. German Youth Sports Camp Badge, Week 1.** Silvered, 28mm, with yellow cocarde. Elbel page 74. VF-EF. **(\$80)**
136. **Berlin 1936. German Youth Sports Camp Badge, Week 2.** Silvered, 28mm, with red cocarde. Elbel page 74. Toned EF. **(\$100)**

**Thank You for Participating at  
[auctions.ioneil.com](http://auctions.ioneil.com)**