



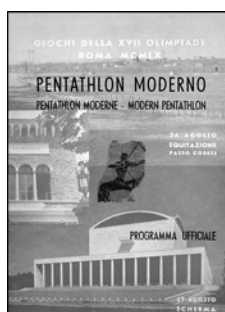
423



424



425



426



427



428



431



432



433



434



435



436



438



439



440

- 423. **Athletics Program, August 31, 1960.** 41pp., 15.3x20.8cm (6"x8.2"). Pink covers. Some results penciled in. EF. (\$100)
- 424. **Athletics Program, September 2, 1960.** 49pp., 15.3x20.8cm (6"x8.2"). Orange covers. EF. (\$100)
- 425. **Basketball Semifinals Program, September 1-3, 1960, Palazzetto dello Sport.** 33pp., 15.3x20.8cm (6"x8.2"). Lt. blue covers. Brown tape spots on inside back cover, o.w. EF. (\$80)
- 426. **Modern Pentathlon-Fencing Program, August 27, 1960.** 33pp., 15.3x20.8cm (6"x8.2"). Green covers. EF. (\$100)
- 427. **Rowing Program, September 3, 1960, Lago di Albano.** Light blue covers. Brown tape spots on inside back cover, some pencil notes, o.w. abt. EF. (\$80)
- 428. **Speed Skating World Championship in Moscow Plaque, 1962.** Clear acrylic, 7.2x11.5cm (2.8"x4.5"). Skate on enameled rink over legend, Moscow skyline below. Easel on back. EF. (\$150)

INNSBRUCK, 9th OLYMPIC WINTER GAMES, 1964

- c429. **Austrian Army Badge.** Green enamel, 30x42mm. Elbel W-022. EF. (\$350)
- c430. **Official's Badge.** Gilt, lt. blue enamel, 30x42mm. Elbel W-018. EF. (\$300)
- 431. **Commemorative Olympic Winter Games in Innsbruck Medal.** Silver, 50mm. View of "Golden Roof". Rev. Ski jump, slalom, bobsled and figure skating around Olympic rings. EF. (\$100)

- 432. **Official Logo Car Plaque.** Black, red, and white painted aluminum, 70mm. VF-EF. (\$125)
- 433. **U.S. Olympic Team Parade Coat.** Cream colored wool with knit top in U.S. colors, blue lining, size 42, by Lakeland Sportswear. With U.S. team patch. EF. (\$275)
- 434. **Official Daily Program, Day 5, February 2, 1964.** 18pp., 11.7x17cm (4.7"x6.7"), in German, English and French. EF. (\$90)
- 435. **(Report) Olympic Bulletin Nrs. 12 and 13, May 1964.** Contains a shortened version of the official report. 190pp., illustrated, 21x29.9cm (8.3"x11.8"), in German, French, and English. Blue and red stiff covers, VF-EF, contents EF. (\$175)

TOKYO, 18th OLYMPIC GAMES, 1964

- 436. **Official Torch.** The bowl is made of blackened aluminum alloy. The cylinder is clad with stainless steel, length 64.8cm (25.5"). Bowl is inscribed "XVII Olympiad Tokyo 1964" and Olympic rings. The bottom of the cylinder features the Tokyo official logo. Small bump on cylinder, o.w. EF. (\$18,750)
- c437. **"XVIII Olympiad" Special Delegates Badge.** Goldplated, 37x60mm. "XVIII Olympiad" on red enameled bar. With sand-colored ribbon. Elbel EF. Cased. Rare. (\$1,250)
- 438. **Participation Medal.** Copper, 61mm, by T. Okamoto/K. Tanaka. Stylized figures of three runners and swimmer. Rev. Olympic rings dividing English and Japanese legend in 6 lines. EF. (\$350)
- 439. **French Team Pin.** Silvered, blue-white-red enamel, 15x26mm. Rooster to left, "Tokyo 1964" within rings below. EF. (\$125)
- 440. **Set of Three Official Gold, Silver and Bronze Medals.** 18 Karat gold, 22mm, sterling silver, and bronze, 30mm, by Y. Kamekura, issued by the Tokyo Olympic Fund Raising Association. Runners to r. Rev. Official logo. EF. (3 pcs.) (\$350)



441



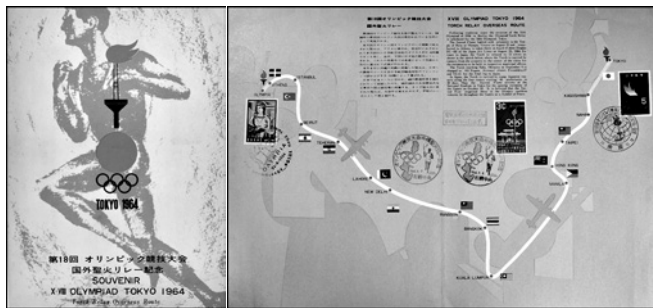
443



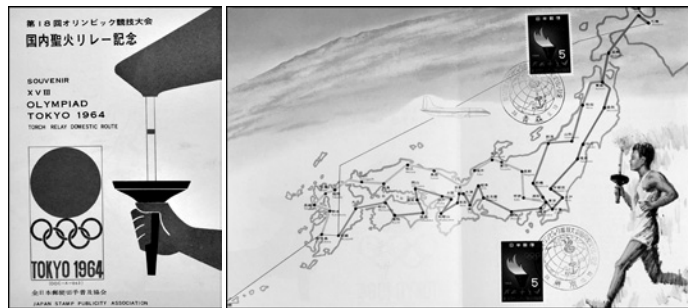
444



445



446



447



448



451



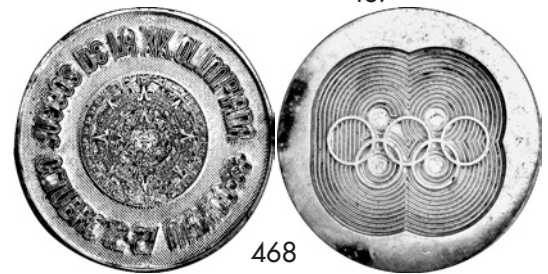
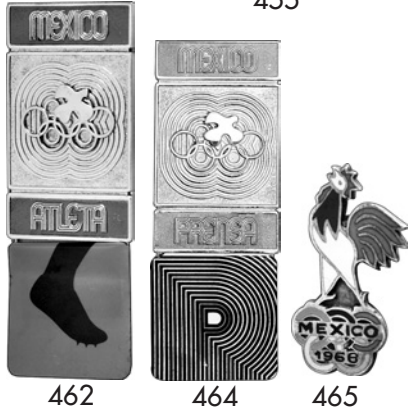
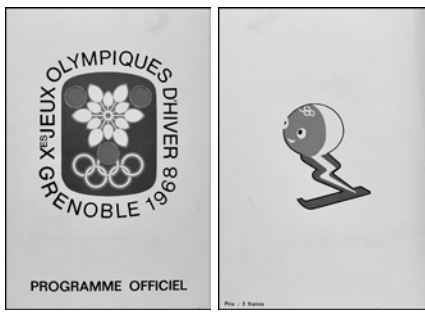
452



454

441. **Polish Team Medal for Tokyo and Innsbruck 1964.** Silvered bronze, 70mm. Olympic rings dividing legend surrounded by laurel wreath. Rev. Torchrunner in textured field. Toned EF, in presentation case. (\$125)
- c442. **British Yachting Team Patch.** Red and blue embroidery on cream wool, 7x7cm (2.8"x2.8"). Rings above British flag between "Great Britain" and "1964 Yachting". EF. (\$125)
443. **Hong Kong Team Patch.** White linen with multicolor design, 13.8x20cm (5.4"x7.9"). Hong Kong coat of arms between rings and "1964". EF. (\$75)
444. **Olympic Cauldron Model.** Blackened and silvered aluminum, 15cm (5.9") tall, base 11x11cm (4"x4"). Black cauldron with steps, on base with sticker "Tokyo 1964/Torch Standard". EF. (\$350)
445. **Official Logo English Enameled IOC Box (1985).** Multicolor enameled copper, 57mm, 33mm high, made by Crummies. Red sun over rings and "Tokyo 1964". Presented by IOC. EF. (\$200)
446. **Souvenir of the 1964 Torch Relay Overseas Route.** Stiff color paper, 4pp., 17.3x24.4cm (6.8"x9.6"). Overseas route from Olympia (with stamp and cancellation August 21, 1964) to Naha, Okinawa (stamp and cancellation September 6) and Tokyo (stamp and cancellation October 10). With relay stops in Istanbul, Teheran, New Delhi, Rangoon, Hong Kong, Taiwan a.o. EF. (\$150)
447. **Souvenir of the 1964 Torch Relay Domestic Route.** Stiff color covers, 4pp., 13x18.1cm (5.1"x7.1"). From Naha (September 8) it was carried to three domestic routes in Kagoshima, Miyazaki and Sapporo, and an additional flame was added in Aoman – covering a distance of 6700 km in 30 days. EF. (\$125)

448. **Water Polo Program, October 11-13, 1964, Metropolitan Indoor Swimming Pool.** 37p., 15x21cm (5.9"x8.3"), in Japanese and English. Includes list of all water polo teams and their members, list of winners since 1900. Notes in red pen. Abt. EF. (\$125)
- GRENOBLE, 10th OLYMPIC WINTER GAMES, 1968**
- c449. **Cased Bronze Third Place Winner's Medal Awarded for 1500M Speed Skating, and IOC Winner's Pin.** Bronze, 60mm, by Roger Excoffon. Logo within French legend. Rev. Depiction of a speed skater, "Patinage de Vitesse" (Speed Skating) below. Edge inscribed with winning event. With ribbon, in black leather presentation case, lined in red velvet and silk. Plus participation medal in cardboard box, and IOC winner's pin in black plastic wallet. *Buyer will receive name of winner.* All EF. (3 pcs.) (\$10,500)
- c450. **Cased Guest Badge.** Silver chrome, 37x52mm. Multicolor logo and "INVITE" in black. Elbel W-010. EF, in original case. (\$800)
451. **Participation Medal.** Bronze, 68mm, by M. Coeffin. Profile of Greek athlete. Rev. City view of Grenoble. EF. (\$325)
452. **Commemorative Beer Mug.** Multicolor ceramic, 11cm (4.3") high, painted by H. Chassagnac. Grenoble Olympic logo and city shield between skis, French bobsled and hockey gear in Alpine landscape. EF. (\$150)
- c453. **Colorful Commemorative Skier's Cloth.** Multicolor linen, 74.5x49.8cm (29.3"x19.6"), by Créations Sonacott, France. Olympic flag over Grenoble, slalom skier in foreground. EF. (\$100)
454. **Official Results.** Approximately 206 pages, color coded by event, 20.4x29.9cm (8"x11.8"). Stiff multicolor covers, trace of tape, VF-EF, contents EF. (\$175)



455. **Group of Official Brochures and Official Program.** Program 4pp., 16.2x24cm (6.4"x9.5"). Mascot Shuss on back cover. Plus 6 page program of the Opening Ceremony, February 6; three official brochures; Esso and Total gas station brochures; and information on traffic and seating. All EF. (10 pcs.) (\$275)
456. **Official Report.** 408pp., illus., in b&w and color. In French and English. EF. Green linen gold stamped, in gilt linen slipcase. (\$675)

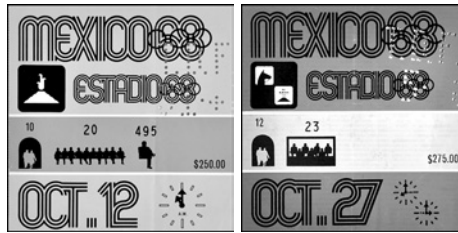
MEXICO CITY, 19th OLYMPIC GAMES, 1968

- c457. **Cased Silver Second Place Winner's Medal in Swimming, 4x100 Meter Medley Relay.** Silver, 60mm. Victory with palm branch and Colosseum stadium in background. Rev. Victorious athlete being carried by teammates. Swimming pictogram attached at top, reverse engraved "relevé combinado/4x100/varonil". In medley relays, the order of strokes is backstroke, breaststroke, butterfly, and freestyle. With blue ribbon, housed in brown leatherette case lined in green velvet. Won by a famous multi medal winning swimmer. EF. (\$9,500)
458. **Official White Metal Torch with White Rope.** Cast white metal, 44cm (17.3") tall, "MEXICO" and logo around top, white linen wrapped around lower part. *This torch style was used in the torch relay in Mexico and for the lighting of the cauldron at the opening ceremony.* EF. (\$4,500)
459. **Official White Metal Torch.** Cast white metal, 45cm (17.7") "Mexico" and logo around top. *This torch was used in the torch relay in Mexico.* Dark toning, EF. (\$3,500)
460. **Official Silver Torch.** Silver color, part of shaft made of wood, 53cm (21") high. Circle of doves around top. *Used in the torch relay in Mexico.* EF. (\$2,600)
461. **Official Black Torch.** Black painted aluminum, part of shaft made of wood, 52.8cm (20.9"). Silver colored doves around top. *The black torch was used in the torch run from Olympia to Athens, Greece.* EF. (\$2,600)
462. **Athletics Participant's Badge.** Goldplated, brown enamel, 37x63mm. With green plastic ribbon and pictogram. Elbel S-139. EF. (\$300)
- c463. **Fencing Jury's Badge.** Goldplated, lt. ochre enamel, 37x63mm. With yellow plastic ribbon with fencing pictogram. Elbel S-050. EF. (\$350)
464. **Press Badge.** Goldplated, 37x63mm. "PRENSA" on red enamel. With plastic "P" ribbon (pinhole). Elbel S-005. EF. (\$275)

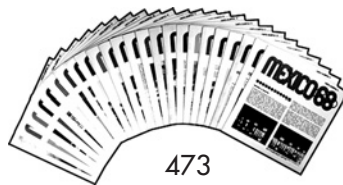
465. **French Team Pin.** Silvered, blue-white-red enamel, 15x28mm. Rooster to left, "Mexico 1968" with rings below. EF. (\$125)
466. **(Tommie Smith Autograph) Black Power Button.** Black and green on white celluloid, 65mm (2.6"). 5-line black legend between green branches. Signed on the back "Tommie Smith 10-16-68". *At the 200 Meter Medal Ceremony on October 16, gold and bronze medal winners Tommie Smith and John Carlos, USA, wearing black socks without shoes and an "Olympic Project for Human Rights" button, raised their gloved fists in the black power salute when the American flag was raised and the National Anthem was played.* EF. (\$750)
467. **Pair of 1968 Mexico Olympic Commemorative Medals.** Silver and bronze, 63mm each. Radiant "Mexico Olympics 1968" and rings. Rev. Aztec design encircled by 2 snakes. Toned EF, cased. (\$200)
468. **Official Commemorative Silver Medal.** Silverplated copper, 59mm. Aztec Calendar. Rev. Official logo. EF. (\$125)
- c469. **Chac Mol the Jaguar – First Olympic Mascot of the Summer Olympic Games.** Pink plush, 34cm (13.4"), 19.5cm (7.7") tall. The jaguar has its head turned towards the viewer, lt. green flowers and dots affixed on his body, lt. green ribbon with Mexico 1968 logo around his neck. *Extremely rare mascot, never offered before. Pictured in the official catalog of Olympic souvenirs.* EF. (\$1,250)
- c470. **Commemorative Ceramic Swimmer Figurine.** Handpainted, 8.2x5.5cm (3.2"x2.2"), made by Ceramica de Cuernavaca. Swimmer about to jump into pool, sombrero on back, Mexico 68 logo and pictogram around base. EF. Rare. (\$150)



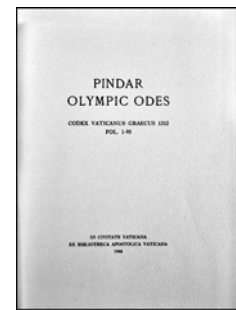
471



472



473



474



477



478



480



481



476

471. **Official Fencing Program, October 16, 1968.** 17pp., 18x18cm (7.1"x7.1"), in French, English and Spanish. Spotty browning on covers, contents EF. (\$75)

472. **Pair of Opening and Closing Ceremony Tickets, October 12 and October 27, 1968.** 11.6x11.8cm (4.6"x4.6"). Opening orange and blue, Price \$250. Crease, traces of mounting on back. Closing fuchsia and green, Price \$275. Creases, abt. EF. (2 pcs.) (\$150)

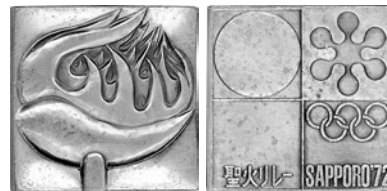
473. **Group of 24 Official Brochures "Carta Olimpica Mexico 68".** Stiff paper, 6 illustrated fold-out pages each. Each contains an illustrated 12-page brochure "Resena Grafica". Information about Olympic events, publicity, venues, pictograms, cultural Olympiad, press center, etc. A wealth of information. Issues 4 to 13, 15 to 26, 28, 29. Almost all EF. (24 pcs.) (\$175)

474. **(Book) Pindar's Olympic Odes from the Vatican Library in Rome.** Facsimile copy published in 1968 by the Organizing Committee as part of the extremely rare Volume V of the Official Report. 174pp., 18.5x24.8cm (7.3"x9.8"). Plus Translation into English: 33-page brochure housed in inside cardboard cover pouch. EF. Scarce. (\$175)

475. **Official Report in Spanish and German.** 4 volumes, illustrated, bound in white and gold-stamped leatherette. Covers reglued on volumes 2 and 3, lt. soiling, cover leatherette has tear on l. on vol. 1 and 4, contents EF. (4 vols.) (\$650)



483



482



484



SAPPORO, 11th OLYMPIC WINTER GAMES, 1972

476. **Official Torch.** Bowl cast blackened aluminum alloy, 13x21cm (5.1"x8.3"), with stainless steel flame tube, total 56cm (22") long, designed by Munemichi Yanagi, made by Nippon Kokki Co. The bowl and the tube display the Sapporo Olympic emblem. Used in the torch relay in Japan, tube discolored, bowl EF. A very rare torch. (\$29,500)

477. **Cased Participation Medal.** Bronze, 60mm, by S. Fukuda. Sapporo Olympic emblem. Rev. Two large arrows attached to stylized athlete. EF, in acrylic case. (\$525)

478. **Cased Radio & TV Badge.** Silvered, 37x59mm, red enameled bar. With white ribbon, yellow stripe in center. Elbel W-046. In original white leatherette case. EF. (\$650)

479. **Participant's Badge with Green Ribbon.** Silvered, 37x59mm. "Competitor" on green enamel. With green ribbon. Elbel W-43. EF. (\$450)

480. **Pair of French Team Pins.** Goldplated, 20x30mm and 13x20mm. Rooster with skis, "1972" within rings, "Sapporo" below. And French rooster with skis, "Sapporo 1972" on white enamel below. EF. (2 pcs.) (\$150)

481. **Official Soviet Team Pin Set.** Multicolor, mostly enameled. Ten different pins, all EF, cased. (\$125)

482. **Official Torchbearer's Medal.** Goldplated bronze, 32x32mm. Cauldron with Olympic flame. Rev. Logo. EF, in original plastic box and paper sleeve with logo. (\$200)

483. **Official Commemorative Silver Medal.** Silver, 50 grams, "1000". View of Sapporo surrounded by snowflakes. Rev. Logo over Japanese and English legend. EF. (\$100)

484. **XI Winter Olympics Silver Proof Set of 11 Medals.** Silver, .999, 32mm each, struck by Franklin Mint. View of Sapporo, plus all 10 winter sports. Rev. Logo over legend. All proof, in leatherette case. (\$175)