



674. **LILLEHAMMER, 17th OLYMPIC WINTER GAMES, 1994 Official Souvenir Torch.** 60cm (23.8"), wood and metal engraved with 6 winter events. Accompanied by wooden display stand, 31cm (12.2") tall featuring Lillehammer logo and torch runner. EF. In original pictorial box. (\$300)
675. **Men's Swiss-Made Moonphase IOC Presentation Watch.** Brown leather band. New, in suede leather wallet with gold Olympic rings. (\$150)
676. **Commemorative Mascot Håkon Knife.** Steel, with logo, wooden handle, 20cm (7.9") long. With brown leather sheath and affixed silver logo. In presentation box. EF. (\$150)
677. **Participation Diploma.** Multicolor, 21x29.7cm (8.3"x11.7"). In pictorial cover. EF. (\$150)
678. **Hugin (Thought) – Official Newspaper of the XVII Olympic Winter Games.** Each 28pp., illustrated in b&w with color covers, 29x40.3cm (11.4"x15.7"), in Norwegian, English, French, and German. Included are February 7 and February 10 to 27, 1994. The Games, venues, torch relay, Lillehammer town, athletes, etc. Lt. browning, EF. (20 pcs.) (\$175)
679. **Munin (Memory) – Official Newspaper of the XVII Olympic Winter Games.** Each 4pp., illustrated in b&w, 29x40cm (11.4"x15.7"), in English and French. Included are February 7 and February 12-27, 1994. Contains interesting information about the teams, events, Lillehammer. Lt. browning, EF. (17 pcs.) (\$125)
680. **Official Results.** 402pp., 22.9x22.5cm (9"x8.9"). Pink pictorial stiff covers. EF. (\$150)

ATLANTA, 26th OLYMPIC GAMES, 1996

681. **Official Centennial Torch.** Silvered aluminum and wood, 55cm (21.65"). Names of all 23 Olympic cities from 1896 to 1996 inscribed on torch. *The Hellenic Olympic Committee celebrated the 100th Anniversary of the 1896 Olympic Games in the Panathenean Stadium in Athens on April 6, 1996. Part of this celebration was the re-enactment of the 1896 Games. Olympic medalists and representatives of all cities who had hosted the Olympic Games since 1896 took part in the torch run within the stadium. Afterwards, they took the torches back to their Olympic cities for a ceremony.* Unused. EF. (\$2,750)
682. **Official Torch.** Aluminum and Georgia pecan wood, 80cm (31.5") length, designed by Peter Mastrogiannis. 22 reeds represent the cities where Olympic Games were held since 1896. Gathered by 2 goldplated brass bands, the top band displays the Atlanta torch logo and the quilt of leaves design, the bottom band lists all Olympic cities since 1896. The wooden pecan handle represents the connection of the flame between heaven and earth. *The flame was lit in*

683. **Cased Bronze Third Place Winner's Medal Awarded for Fencing, Men's Team Foil.** Bronze, 70mm, by Malcolm Grier Designers. Victory seated above stadium. Rev. Atlanta logo over laurel branches and pictogram. Edge engraved with name of event. With green and gold bordered ribbon with Atlanta logo. EF. Housed in wooden presentation box. (\$6,500)
684. **Russian Team Silver Medal.** Silvered bronze, 50mm. Costumed female under laurel tree. Rev. Logo. EF. (\$125)
685. **Commemorative Atlanta 1996 Calendar Medal.** Silvered bronze, 50mm, by Dr. Ining GmbH, Germany. View of downtown Atlanta. Rev. Calendar for 1996. EF. (\$90)
686. **Waterford Crystal Atlanta 1996 Olympic Torch.** 10.2x20cm (4"x2.9"), 3.1cm (1.2") thick. Cauldron with "100 Atlanta 1996" and Olympic rings, flame logo above. EF, in original case with silver Atlanta logo. (\$175)
687. **Olympic Games Centennial English Enameled IOC Presentation Box.** Multicolor enameled copper, 58mm, 33mm tall, made by Crummies, England. Atlanta logo; Athens 1896 official poster design on inside top. EF, in IOC presentation box. (\$175)
688. **(Book) Hannigana, Glenn and Mashburn, Robert. One Glorious Summer. A Photographic History of the 1996 Atlanta Olympics.** Multicolor stiff covers, 40pp., illustrated, 25.4x33cm (10"x13.2"). EF. (\$100)

Olympia. It reached Los Angeles on April 27 and ended 84 days later in Atlanta, carried by 10,000 relay runners, horses, bicycles, trains, ships, and hydroplanes. EF. (\$2,500)



690



691



691



692



692



693



693



694



696



697



699

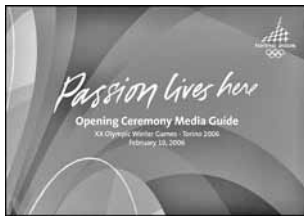


689. **Official Presentation Torch.** Aluminum, partially gilt, 27.7cm (10.9"). Designed after ancient Japanese torches called Taimatsu. It shows the Nagano emblem and sports pictograms, and a brightly colored orange cord wrapped around the lower part forms the grip. Only a very small number of these torches was made for presentation to high dignitaries. *Torch is housed in a wooden case, lined with green velvet. Brass plate commemorating the torch run Jan. 6 – Feb. 6, 1998.* EF. Very rare. **(\$2,750)**
690. **Swiss Team Pin Set.** 12 color enameled pins, 33x26mm each, showing different sports. Unc., cased. (12 pins) **(\$250)**
691. **Official Cased Set of Commemorative Figure Skating Silver and Slalom Skiing Bronze Medals.** Both 60mm, silver 130 grams (over 4 ounces). Obverse shows a female figure skater, and a slalom skier. Rev. Nagano logo. Both Unc., in velvet and silk-lined leather case, with brochure. **(\$500)**
692. **Official Cased Set of Commemorative Cross Country Skiing Silver and Ice Hockey Bronze Medals.** Both 60mm, silver 130 grams (over 4 ounces). Obverse shows two cross country skiers, and an ice hockey player with goalie. Rev. Nagano logo. Both Unc., in velvet and silk-lined leather case, with brochure. **(\$500)**

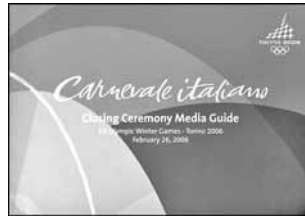
693. **Official Cased Set of Commemorative Ski Jumping Silver and Speed Skating Bronze Medals.** Both 60mm, silver 130 grams (over 4 ounces). Obverse shows a ski jumper in the air, and a speed skater. Rev. Nagano logo. Both Unc., in velvet and silk-lined leather case, with brochure. **(\$500)**
694. **Official U.S. Team Men's Wool Blazer.** Burgundy and blue, medium size, made by Bill Blass, USA. With gold thread embroidered Nagano U.S. Olympic team logo patch. New. **(\$150)**
695. **Commemorative Ceramic Nagano 1998 Olympic Beer Stein.** Multicolor logo, 20.5cm (8.1") tall, made for Anheuser-Busch by Ceramarte, Brazil. Official color logo flanked by logos of 6 previous Olympic winter games. With pewter top. EF. **(\$100)**
696. **Mikimoto Pearl Bookmark with Nagano Logo.** Silvered, 12cm (4.7"). Pearl on snowflake at top, logo in gold. Boxed. EF. **(\$75)**
697. **IBM Fan Mail Penguin Mascot.** Bean bag, colored felt, 17.5cm (6.9"). Dark and lt. blue with yellow beak. EF. **(\$100)**
699. **XIII Pan American Games in Winnipeg, Canada, 1999. Participation Medal.** Silvered, 60mm. Winnipeg '99 logo. Rev. Pan-Am Games logo. EF. **(\$100)**



- SYDNEY, 27th OLYMPIC GAMES, 2000**
700. **Official Commemorative Torch in Original Wooden, Glazed Wall Case.** Officially sanctioned by the IOC to be sold in a limited number to the public. Center part open to show burning unit inside. Mounted with descriptive background, 53x86cm (21"x34"). EF. **(\$2,250)**
- c701. **Official Sydney 2000 Torch Relay Sculpture.** Steel (from the same coil as the cauldron), blue and clear glass representing the blue Pacific Ocean, and a silver inlay on the torch relay logo from the same silver used to strike the Sydney 2000 winners medals. About 15cm (5.9") wide, 41cm (16") tall. This art sculpture beautifully represents the Sydney 2000 Olympic Games. Numbered. EF. **(\$2,250)**
702. **Cased Sports Writers Association of Malaysia Medal (2000).** Goldplated, 63mm. Athlete. Gilt rectangular plaque with 5-line legend affixed on inside top of red velvet case. EF. **(\$100)**
703. **Set of 16 Official Olympic Daily Programs, Day 1, September 16 to Day 16, October 1, 2000.** 34pp. each, illustrated in black and white, 12.3x17.4cm (4.8"x6.9"). Every sport, every event, every athlete. Blue covers. EF. (16 pcs.) **(\$175)**
- SALT LAKE CITY, 19th OLYMPIC WINTER GAMES, 2002**
704. **Official Torch.** Silver colored metal and glass, 83.8cm (33") long. Shaped like a fiery icicle in motion, the polished silver colored bottom bears the motto "Light the fire within"; center metal and glass top section in "frozen flame" texture with logo on metal part. EF. **(\$2,500)**
705. **Russian Olympic Team Medal.** Bronze, 50mm. Logo. Rev. Legend between Russian NOC logo and Kremlin view. EF. **(\$125)**
- c706. **Complete Torch Relay Pin Set with Map.** 14 pins and colorful foldout board with map, 69.9x23.1cm (27.5"x9.1"). Pins can be inserted in map. EF. **(\$125)**
707. **Autographed Figure Skate Signed by 2002 Ladies Medalists Sarah Hughes, Michelle Kwan, and Irina Slutskaya. Signed on Opposite Side by Canadian Pairs Gold Medalists Jamie Sale and David Pelletier.** Also included is a ticket from the Ladies Free Skate, February 21, 2002: the Detailed Classification List for the Ladies Free Skate issued by the Salt Lake Organizing Committee immediately after the event, and a February 22, 2002 issue of the Salt Lake Tribune with full coverage of the Ladies Free Skate. All EF. (4 pcs.) **(\$425)**
- ATHENS, 28th OLYMPIC GAMES, 2004**
708. **Official Torch.** Silver colored metal and olive wood, 68cm (26.8") long. The torch resembles an olive leaf, and the design wants to express "Pan Metron Ariston" (All things in moderation, translated from Greek). A simple and beautiful design. EF. **(\$2,250)**
- c709. **Bronze Third Place Winner's Medal Awarded for Greco-Roman Wrestling.** Bronze, 60mm, by Elena Votsi and Kostas Kazakos. Winged Nike over Panathinaikon Stadium, Acropolis in background. Rev. Athens 2004 logo and Olympic flame dividing 4-line Greek legend, sport in Greek language below. With multicolor ribbon. *For the first time since Amsterdam 1928, the design of the winner's medals was changed. From now on the medals will reflect the fact that Greece was the country where the Olympic Games originated, and saw their revival.* Abt. EF. **(\$6,500)**
- c710. **Official Torchbearer's Uniform for the Athens 2004 Torch Relay.** White cotton and polyester, blue design, XL size, made by Adidas. T-Shirt with Athens 2004 and torch relay logos. Plus shorts and headband. EF (3 pcs.) **(\$175)**
- c711. **Commemorative Goldplated Winner's Olive Wreath.** Wreath 19cm (7.5") wide mounted on clear acrylic base. Real olive plant coated with 24 Karat gold made by SM Art. *All winners in Athens received a real olive wreath in addition to their medal.* EF, boxed. **(\$250)**
712. **Olive Branches on Glass Sportins Hospitality Artwork.** Handmade, 24x12cm (9.4"x4.7"), by M art Manolioudakis. Three silver olive branches with "2004" affixed on glass plate. Boxed. EF. **(\$150)**
- TORINO, 20th OLYMPIC WINTER GAMES, 2006**
713. **Official Torch.** Blue techno-polymer-coated aluminum, 77cm (30.3") long, made by Pininfarina. *The fire was lit in Olympia on November 27, 2005, and arrived in Rome on December 8. Until February 10 the torch traveled over 11,300 km across Italy, also France, Switzerland and Slovenia.* This torch was used in the torch relay and shows light discoloration at the top where the flame burned. Abt. EF. **(\$1,850)**
- c714. **Luge Skeleton Bib.** Orange and yellow polyester, black number. EF. **(\$150)**
- c715. **Torino 2006 TOBO Bib.** Dark and light blue polyester. EF. **(\$150)**
716. **Group of 13 Daily Olympic Village Newspapers.** 8pp. each, multicolor, 29.7x42cm (11.7"x16.5"), in English and French. Included are February 12, and February 15-26, 2006. Articles on the Games, the village, athletes, culture, etc. Center fold, o.w. EF. (13 pcs.) **(\$150)**



717



718



721



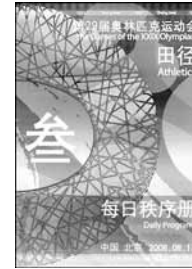
722



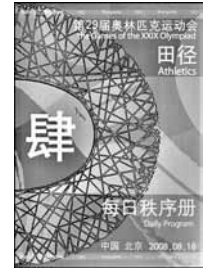
726



727



728



729



730



731



732



733

717. (Brochure) **Passion Lives Here. Opening Ceremony Media Guide, February 10, 2006.** Illustrated in color, in English (68pp.) and Italian (68pp.), 29.2x21cm (8.3"x11.5"). Detailed information about the course of the opening ceremony. Red covers. EF. (\$150)
718. (Brochure) **Carnevale Italiano. Closing Ceremony Media Guide, February 26, 2006.** Illustrated in b&w, 29.2x21cm (11.5"x8.3"), in English (60pp.) and Italian (60pp.). Detailed information about the course of the closing ceremony. Blue covers. EF. (\$150)

BEIJING, 29th OLYMPIC GAMES, 2008

- c719. **Official Torch.** Red and anodized aluminum, 72cm (18.4") long. Curved form in the shape of a paper scroll, with lucky clouds graphic expressing harmony. *The torch relay started in Olympia, Greece, on March 24, traveled to over 100 cities on five continents and all of China, a distance of 137,000km. Although a large number of torches were made they remain extremely hard to find.* EF. (\$5,500)
- c720. **Cased Bronze Third Place Winner's Medal Awarded for Women's Taekwondo.** Bronze, 70mm, with inlaid dark green jade. Victory above Athens Panathenian Stadium. Rev. Beijing logo surrounded by inlaid jade, event engraved on outer ring. In red lacquered box and gray silk case. (\$8,500)
721. **Commemorative Torch Relay Medal.** Silvered, multicolor enamel, 40mm. Torch relay logo. Rev. Flaming red enameled torch, Mount Everest in background. Unc. (\$75)
722. **Swiss Olympic Team Medal.** Silvered, partially enameled in color, 56x56mm. Logo between Chinese and Swiss flag. Rev. Legend above flower. Unc., in presentation case. (\$250)
- c723. **Olympic and Paralympic Volunteers Medal.** Goldplated, 52mm. Logos above Bird's Nest Stadium. Rev. Chinese legend. In wooden box with logos on top, lined in velvet. Unc. (\$150)
- c724. **Colorful Round Woven Wool Hat Worn by the Kazak Team in the Opening Ceremony.** Diameter 17cm (6.7"). EF. (\$75)
- c725. **Model of the Bird's Nest Olympic Stadium.** Goldplated, on black

- base, 20.6x12.1cm (8.1"x2.5"). Gold metal model is 1:39 scale, and the top can be lifted off the stadium to show the inside seating. Unc. Housed in original box. (\$275)
726. **Daily Program No. 1, Athletics, August 15, 2008.** 35pp., illus. in color, 20.8x29.2cm (8.2"x11.5"), in English and Chinese. Men's Shot Put and Women's 10 000m Finals, etc. Orange and yellow covers. EF. (\$90)
727. **Daily Program No. 2, Athletics, August 16, 2008.** 50pp., illus. in color, 20.8x29.2cm (8.2"x11.5"), in English and Chinese. Men's 20km Race Walk Final, etc. Orange and yellow covers. EF. (\$90)
728. **Daily Program No. 3, Athletics, August 17, 2008.** Green covers, 54pp., 20.7x29.2cm (8.1"x11.5"), in English and Chinese. Women's Marathon, Finals in Men's Hammer Throw, Women's Triple Jump, Men's 10,000M, etc. EF. (\$90)
729. **Daily Program No. 4, Athletics, August 18, 2008.** 41pp., illus. in color, 20.8x29.2cm (8.2"x11.5"), in English and Chinese. Finals in Women's Discus Throw, Men's Long Jump, Women's 800m, Men's 400m Hurdles, and Men's 3000m Steeplechase, etc. Green covers. EF. (\$90)
730. **Daily Program No. 5, Athletics, August 19, 2008.** blue covers, 50pp., 20.8x29.3cm (8.2"x11.5"), in English and Chinese. Finals in Men's Discus Throw, Men's High Jump, Women's 100m Hurdles, etc. EF. (\$90)
731. **Daily Program No. 6, Athletics, August 20, 2008.** 39pp., illus. in color, 20.8x29.2cm (8.2"x11.5"), in English and Chinese. Finals in Women's Hammer Throw, Men's 200m and Women's 400m Hurdles, etc. Blue covers. EF. (\$90)
732. **Daily Program No. 7, Athletics, August 21, 2008.** Yellow and orange covers, 51pp., 20.8x29.3cm (8.2"x11.5"), in English and Chinese. Finals in Women's 20km Walk, Women's 20km Walk, Javelin Throw. Women's 200m, Men's triple Jump, etc. EF. (\$90)
733. **Daily Program No. 8, Athletics, August 22, 2008.** Orange covers, 48pp., 20.8x29.2cm (8.2"x11.5"), in English and Chinese. Men's 50km Walk, finals in Men's Pole Vault and women's 5000m. with a few notes, EF. (\$90)