



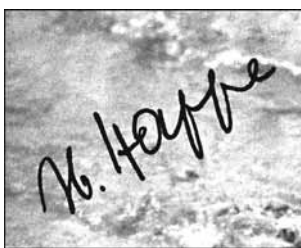
468



469



470



476



471



474



476



477



479



480



481



478

468. **Large Commemorative Bottle Opener.** Chrome-plated, 24.5cm (8.6") long. Raised flaming torch dividing "Melbourne Olympic Games 1956". EF. (\$100)

469. **Pair of Official Wrestling Programs. Free Style, Nov. 28-Dec. 1, 1956 and Greco-Roman, December 3-6, 1956.** 20pp. each, 13.9x19.1cm (5.5"x7.5"), dark green, and lavender covers. EF. (2 pcs.) (\$125)

470. **(Autograph Brochure) Hannes Berger, Our Olympic Winners. Mittag Sportheft 2.** 32pp. illustrated, 15x20.9cm (6"x8.2"), in German. Details about East and West German winners in Melbourne with photos, lists of first 3 winners in all events in Melbourne, Cortina, and Stockholm. Photo of gold medal winning swimmer Ursula Happe on cover, signed in ink "U. Happe". Sm. cover crease, lt. browning, EF. (\$100)

471. **55th IOC Session in Sofia, 1957. Official Medal.** Bronze, 63mm. Olympic rings over cauldron with flame. Rev. Sofia coat of arms between laurel branches. EF, lt. spots. (\$125)

c472. **Gold Winner's Medal of the 1958 Ice Hockey World Championship in Oslo.** Goldplated, 59mm. Goalie, "1958" below. Rev. International Ice Hockey Federation logo. EF. (\$800)

c473. **Gold Winner's Medal of the 1958 Ice Hockey European Championship in Krefeld, Germany.** Goldplated, 50mm. Goalie, "1955" below. Rev. Logo of the International Ice Hockey Federation. EF. (\$575)

474. **Italian Swimming Federation Quadrennial Water Polo Championship, 1958. Gold Winner's Medal.** Goldplated bronze, 49mm, by Affer. Water polo players. Rev. Shell with legend over Olympic rings. EF. (\$125)

c475. **Soccer World Cup in Stockholm, 1958. Pair of Merit Badges.** Goldplated bronze, 30x46mm and 16x25mm. Head of King Gustav VI left. Rev. Crowns above "World Championship Football Sweden 1958" in Swedish between laurel branches, soccer ball over globe below. Crown at top, with blue and yellow-striped ribbon in Swedish colors. Pins on back. Housed in red leather case, lined in velvet and silk. EF. Rare. (\$1,250)

476. **Soccer World Championship in Stockholm Commemorative Pin, 1958.** Multicolor enameled bronze, 23x26mm. "Sverige 1958" over soccer player, laurel branch below. EF. (\$125)

477. **(Book) The 54th Session of the IOC, 1958, Tokyo. Third Asian Games 1958 Tokyo.** 32pp., several fold-out pages, b&w and color, 21x30cm (8.5"x11.8"), in English. Photographic report of the IOC Session and the Asian Games. Gold boards, embossed, lt. wear, contents EF. (\$175)

SQUAW VALLEY, 8th OLYMPIC WINTER GAMES, 1960
478. **Official Torch.** Aluminum alloy, 48.5cm (19.1") tall, made in the Walt Disney Studio machine shop. Similar to the 1948 and 1956 torches at top with cut-out Olympic rings over "VIII Olympic Winter Games 1960", below the Squaw Valley logo between branches and "Olympia to Squaw Valley". Part of original wick on top. The upper part of the torch handle is wrapped with black tape, as made, to keep the torch handle cool enough to hold. A mixture of kerosene and mineral oil was used to light the torch, not well tested: six torches burnt out during the torch relay and were discarded. The remaining torches were rotated during the relay. The flame was lit in Mordedahl, Norway, and flown to Los Angeles, then by relay taken to Squaw Valley. On Opening Day, February 12, 1960, Andrea Mead Lawrence skied with the torch from Little Papoose Peak to the stadium where she handed the torch to skater Ken Hendry (both won gold in Oslo 1952) who lit the urn at the Tower of Nations. One of only about 21 torches made by Walt Disney who directed all 1960 Winter ceremonies. Light wear, abt. EF. Extremely rare. (\$75,000)

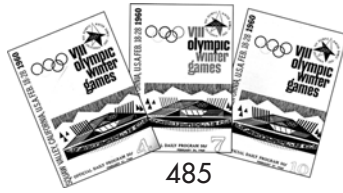
479. **Polish NOC Fundraising Medal for Squaw Valley and Rome Olympic Games.** White porcelain, 9.4cm (3.7"), decorated in gold and gray. Large rings dividing legend. Rev. Olympic motto and legend. EF. Scarce. (\$175)

480. **Commemorative Celluloid Button.** Blue and red on white, 44mm. Logo with venues and skier. EF. (\$125)

481. **Commemorative Calendar Lighter.** Nickel-plated, 40mm. Logo and 1950-1977 calendar. VF-EF/EF. (\$175)



484



485



488



489



492



494



495



496



500



498



501



502

- c482. **Commemorative Handpainted Ceramic Vase.** Multicolor, 10.5cm (4.1") high. View of Squaw Valley, Olympic rings between skiers, over Olympic legend. Top edge goldplated. EF. (\$150)
- c483. **Flaming Torch Commemorative Beer Stein with Pewter Top.** Multicolor painted ceramic, 23cm (9.1") high. Flaming torch and Olympic rings within legend, Edelweiss border, Alpine houses on either side. EF. (\$175)
484. **Official Daily Program Nr. 7, February 24, 1960.** 23pp., 12.3x17.9cm (4.8"x7"). Men's Special Slalom won by Hinterseer, Austria; Grishin, Soviet Union, wins 500 Meters Speed Skating; ice hockey, etc. EF. (\$100)
485. **Group of Three Official Daily Programs. Nr. 4, February 21, 1960, Nr. 7, Feb. 24 and Nr. 10, Feb. 27, 1960.** Each 23pp., 12.3x18cm (4.8"x7.1"). VF-EF to EF (3 pcs.) Crease, abt. EF. (\$250)
- ROME, 17th OLYMPIC GAMES, 1960**
- c486. **International Sports Federation Badge.** Bronze, partially goldplated, 45x51mm. "F.I.S." on dark purple enameled bar. Elbel S-003. One of 43 badges. Rare. (\$2,000)
- c487. **President of National Olympic Committee Badge.** Bronze, 45x50mm. Two goldplated laurel wreaths, "C.N.O." on dark purple enameled bar. Elbel S-002. EF. Scarce. (\$900)
488. **Official's Badge.** Bronze, 37x47mm. "UFFIZIALE" on red bar. Elbel S-008. EF. (\$300)
489. **Service Badge.** Bronze, 37x47mm. "SERVIZIO" on cream enameled bar. Elbel S-018. EF. (\$300)
- c490. **Fencing Badge.** Bronze, 48x38mm. "ATLETA" on light yellow enameled bar. Elbel S-019. EF. (\$375)
- c491. **Philippines Team Pin.** Gilt, multicolor enamel, 19x9mm, by C. Zamora. Rare. EF. (\$125)
492. **Polish Fund Raising Pin.** Silvered, white and red enamel, rings in color, 23x25mm. EF. (\$100)

- c493. **Pope Johannes XXIII Rome 1960 Olympic Games Presentation Medal.** Gold, 28mm, 12.3 grams, "917", by G. Manzu. Bust I. with mozzetta and camauro. Rev. "Oboedientia et Pax" (Obedience and Peace) under olive plant. Presented at a private audience to officials of National Olympic Committees and International Federations on September 7, 1960. See Official Report pages 464-472. EF. Very rare. (\$1,250)
494. **Pope Johannes XXIII Rome 1960 Olympic Games Presentation Medal for Athletes.** Bronze, 33mm, by G. Manzu. Bust I. with mozzetta and camauro. Rev. "Oboedientia et Pax" (Obedience and Peace) under olive plant. Presented to athletes of the Rome Olympic Games. Official report pages 464-472. EF. (\$175)
495. **Commemorative Torch Relay Medal, 1960.** Bronze, 33mm, by Merzagora. Torchrunner with flaming torch. Rev. Olympic rings and legend under tree. Toned EF. (\$75)
- c496. **Rome Olympiad Italian Newspaper "IL Giornale d'Italia" Recognition Medal, 1960.** Silvered copper, 50mm. Man with flag. Rev. Olympic legend. With fob-style loop, abt. EF. (\$125)
- c497. **ICU World Championship in Cycling in Leipzig, East Germany. Official Medal.** Silvered, center multicolor enamel, 10cm (3.9"). East German state colors and symbol, spoked, wheel, 5 different color stripes, and map of Western Europe affixed in center, surrounded by French legend. EF. (\$125)
498. **Opening of the Stadium in Cairo, Egypt, Medal, July 23, 1960.** Silvered bronze, 60mm. Aerial view of stadium. Rev. City gate between Arabic legend and Olympic rings. Toned EF. (\$150)
- c499. **South African Team Patch.** Green linen, embroidered in 4 colors, 16x20.2cm (6.3"x8"). Springbock over "Olympic Games Rome 1960", between South Africa legend. EF. Very scarce. (\$125)
500. **Discus Thrower Sculpture (about 1960).** Marble-like stone, 40cm (15.8") tall. EF. (\$250)
501. **Ticket. Boxing, "196", August 27, 1960, Palazzo Dello Sport.** Orange, 18.5x9.5cm (7.3"x3.7"). Small tape on back at r., o.w. EF. (\$125)
502. **(Full Ticket) Closing Ceremony, September 11, 1960, Olympic Stadium.** Violet, 27.7x9.5cm (10.9"x3.7"). Lt. crease, o.w. EF. (\$100)



503



504



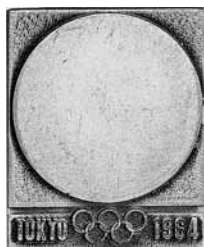
507



508



509



511



512



513



514



515



516



516



518



519



520

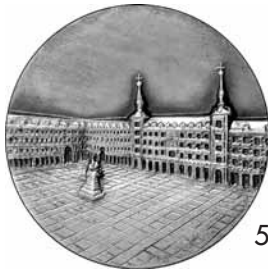
INNSBRUCK, 9th OLYMPIC WINTER GAMES, 1964

- 503. **Press Badge.** Gilt, enameled, 30x42mm, black background. EF. (\$200)
- 504. **Austrian Olympic Committee Presentation Medal.** Silver, 40mm, struck by Austrian State Mint. Austrian NOC logo. Rev. Logo on snowflake surrounded by 9 different winter sports. Ltly. toned. (\$100)
- c505. **Colorful Olympic Events Designer Scarf.** 60x59cm (23.6"x23.2"), by Donald Brun. Logo on large ice crystal in center surrounded by Olympic winter sports. EF. (\$125)
- c506. **Commemorative Ski Jump Glass.** Multicolor, handpainted, 11.7cm (4.6"). Ski jumper over mountain side. EF. (\$100)
- 507. **Opening Ceremony Ticket, January 29, 1964,** Bergisel-Sprungschanze, 11:00. Price S 60.-, 6x10.9cm (2.4"x4.3"). Crease, sm. chip upper l., VF-EF. (\$150)
- 508. **Closing Ceremony Ticket, February 9, 1964,** Olympia-Eisstadion, 20:00. Price S 60.-, 14.1x8cm (5.6"x3.1"). EF. (\$150)
- 509. **Official Results.** 136 pages, 21.7x29.8cm (8.5"x11.7"), in German, English and French. Spiral bound, with red protective celluloid cover. EF. (\$150)

TOKYO, 18th OLYMPIC GAMES, 1964

- c510. **National Olympic Committee Badge.** Goldplated, surrounded by stripes in Olympic colors, 67x50mm. "N.O.C." on orange bar. With white ribbon, 2 yellow stripes. Elbel S-012. EF. Rare. (\$1,750)
- 511. **Official Torch Relay Badge for Torchbearers.** Silvered, 26x32mm. Large logo. Rev. "Olympic Torch Relay XVIII Olympiad" in Japanese and English. EF, in original box. (\$225)
- 512. **XVIII Olympiad Badge.** Goldplated, 25x38mm (1"x1.5"). "Tokyo 1964" and rings on green, "XVIII Olympiad" on blue enamel below. Japanese legend on back. Special Delegates badge(?). EF, in cardboard box with gold Japanese legend. EF. (\$300)
- 513. **Soviet Team Medal.** Bronze, 55mm. Hammer and sickle emblem. Rev. Moscow building. Toned EF. (\$150)

- 514. **Cased Set of Three Official Gold, Silver and Bronze Medals.** 18 Karat gold, 22mm, sterling silver, and bronze, 30mm, by Y. Kamekura, issued by the Tokyo Olympic Fund Raising Association. Runners to r. Rev. Official logo. With brochure, in plastic case with gold and red logo (worn), green felt inside. Medals EF. (\$250)
- 515. **Commemorative Large Runner Plaque, 1964.** Goldplated bronze, 15.4cm (6.1"), by Eiji, made for NRR (Japan Radio). Runner l., over Olympic rings and Tokyo 1964 Olympic Games legend. With easel on back. EF, sm. spots. (\$200)
- 516. **Pair of Tokyo Olympiad 1964 Silver Medals.** Silver, 30mm, and goldplated silver, 28mm. Mount Fuji over Olympic rings. Rev. Flowers over Japanese legend. Both looped, EF. (2 pcs.) (\$100)
- c517. **East German Boxing Olympic Trials Gold Winner's Trophy.** Cobalt blue Ilmenau porcelain, handpainted, 34cm (13.4") tall. Gold legend around top Olympic rings in center; top with gilt laurel leaf. *The boxer won a bronze medal in Tokyo.* EF. Rare. (\$350)
- 518. **Commemorative Seiko Alarm Clock.** Goldplated, 6.2cm (2.4") wide, 3.5cm (1.4") high. Top with discus player and "Tokyo 1964" opens to reveal clock, ancient Greet athletes surrounding sides. VF-EF. (\$175)
- 519. **Set of Six Silvered Olympic Events Commemorative Spoons.** 11.6cm (4.6") long. Field hockey, cycling, soccer, hurdles, swimming, and skating. Rev. Olympic rings over "1964". EF, boxed. (\$125)
- 520. **Runners Poster Design Lighter.** Multicolor, nickel plated, 36x58mm (1.4"x2.3"), made by Prince. Runners r. over "Tokyo 1964" and rings. EF. (\$100)



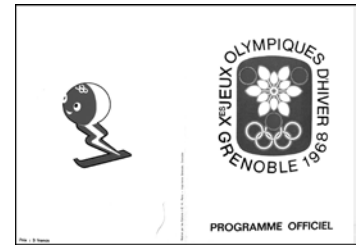
521



523



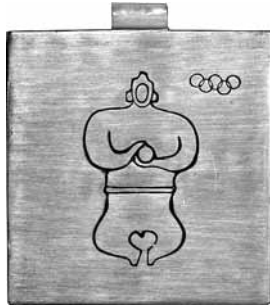
524



526



527



533



528



529



531



535



536



521. **63rd IOC Session in Madrid, 1965. Official Silver Medal for IOC Members.** Silver, hallmarked, 60mm. View of Madrid Square. Rev. Spanish NOC logo encircled by legend. Toned EF. Rare. (\$400)

GRENOBLE, 10th OLYMPIC WINTER GAMES, 1968

- c522. **Organizing Committee Badge.** Goldplated, green enamel, 37x52mm. Logo affixed in center. Elbel W-011. EF. (\$550)
- 523. **ABC Television Badge.** Silvered, color enamel, 25x28mm. EF. (\$125)
- 524. **Commemorative Porcelain Jug with Logo.** 13cm (5.1") tall, made by Badonvillier. Color logo on front of jug. EF. (\$150)
- c525. **Official Logo Poster.** Blue and red, 31.5x51.5cm (12.4"x20.3"), designed by Roger Excoffon, printed by Dardelet, Grenoble. Olympism p. 95. EF. (\$175)
- 526. **Official Program Folder.** Blue and red, 16.9x23.9mm (6.8"x9.4"). Official color logo on cover, inside 2-page program, mascot Shuss on back cover in color. *First time we see the Grenoble mascot Shuss in an official publication.* Contains letter-size speedskating results, Feb. 9, 1968. VF-EF. (\$175)
- 527. **Ticket. Ice Hockey, February 16, 1968, 15:30, Stade de Glace, Price 5F, 23.2x10cm (9"x4").** EF, sm. crease upper r. (\$125)

MEXICO CITY, 19th OLYMPIC GAMES, 1968

- 528. **Official Black Torch.** Black painted aluminum, part of shaft made of wood, 52.8cm (20.9"). Silver colored doves around top. *The black torch was used in the torch run from Olympia to Athens, Greece.* EF. (\$2,250)
- 529. **Official Silver Torch.** Silver color, part of shaft made of wood, 53cm (21") high. Circle of doves around top. *Used in the torch relay in Mexico.* EF. (\$2,250)
- c530. **Bronze Third Place Winner's Medal and Winner's Pin Awarded for Gymnastics.** Bronze, 60mm. Victory seated above stadium. Rev. Winner carried by jubilant athletes. Small plaque with gymnastics pictogram attached. With maroon ribbon. Plus **Miniature Pin** with gymnastics pictogram and 11mm bronze winner's medal: Victory. Rev. Winner carried by jubilant athletes. (2 pcs.) EF. Scarce set. (\$5,000)

- 531. **Arrival of the Torch Relay in Barcelona, Spain on Its Way to Mexico, September 1968. Official Bronze Medal.** 50mm. Flaming torch dividing Barcelona and "Mexico 68". Rev. 9-line Spanish legend, Olympic rings in back. EF. Rare. (\$200)
- c532. **Black Power Button.** Black and green on white celluloid, 65mm (2.6"). 5-line black legend between green branches. *At the 200 Meter Medal Ceremony, gold and bronze medal winners Tommie Smith and John Carlos, USA, wearing black socks without shoes and an "Olympic Project for Human Rights" button, raised their gloved fists in the black power salute when the American flag was raised and the National Anthem was played.* EF. (\$1,000)
- 533. **Official Athlete Medal.** Copper, 47x49mm. Old Mayan athlete, rings at top r. Rev. Logo. Original loop at top. EF. (\$100)
- c534. **Official Commemorative Gold Medal.** Pure gold, "999", 20mm, 3.1 grams, struck at the Paris Mint. Ancient Greek discus thrower. Rev. Mayan god and Olympic rings, radiant Olympic flame in background. Unc. (\$150)
- 535. **Commemorative Mexico 1968 Olympic Games Medal.** Silver, "1000", 50mm. Facing head in circle of rays, Olympic rings at l. Rev. Flower design. Unc. (\$100)
- 536. **International Athletics Competition in Sao Paulo, Brazil, in the Olympic Year 1968.** Silvered, 50mm, by Esmaltarte. Torch medal and olive branch with ribbon and "Mexico 68" logo, "Ano Olimpico" below. Rev. Three flags over South America. EF. (\$100)

Please Bid Early!