



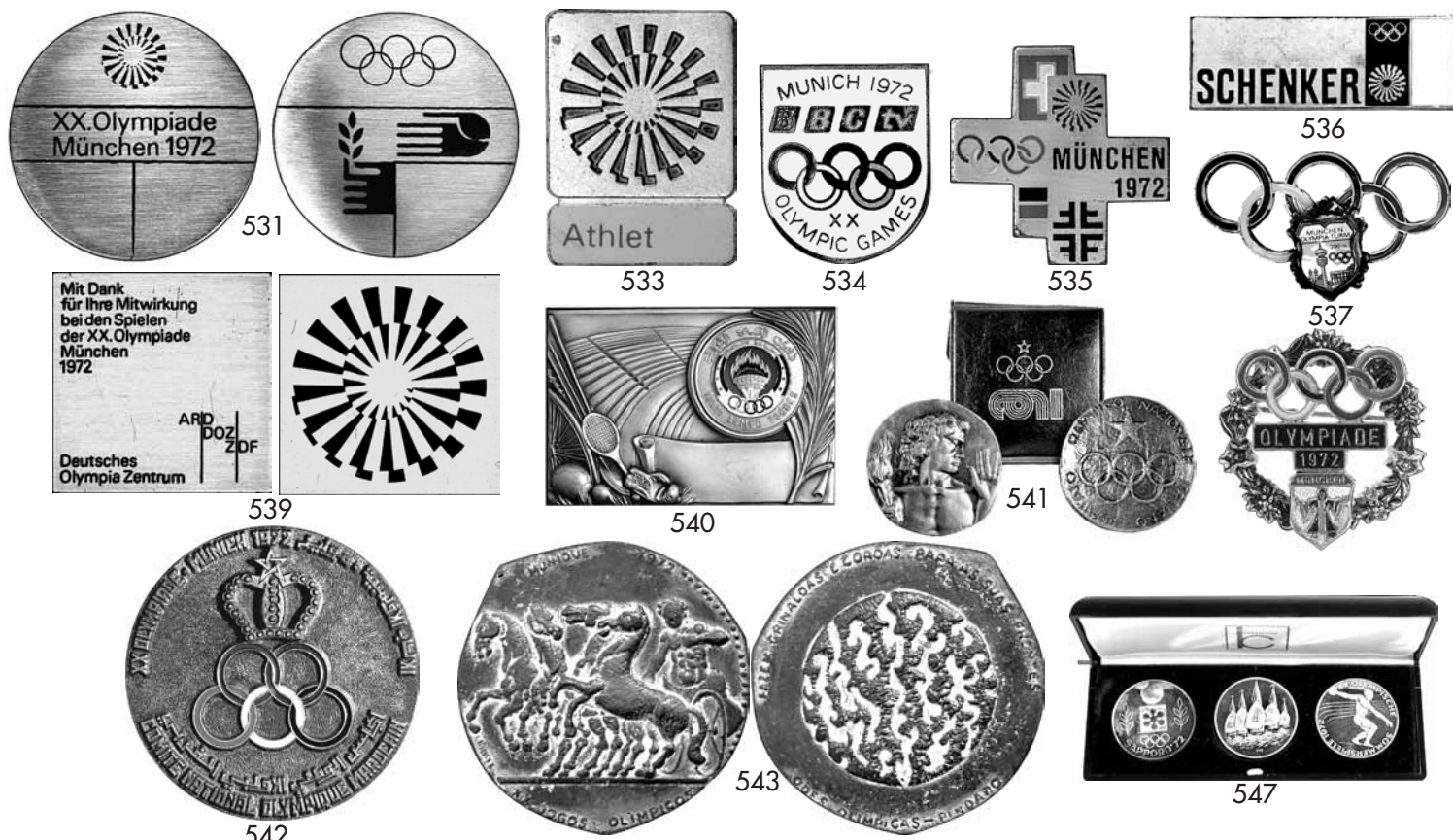
511. **Equestrian Official Daily Program, October 27, 1968.** 13pp., 17.8x17.8cm (7"x7"), in French, English and Spanish. Olympic Jumping Grand Prix, finals scored in pencil. VF-EF. (\$75)
512. **Water Polo Official Program, October 14-26, 1968.** 98pp., 18x18cm (7.1"x7.1"), in French, English and Spanish. History, venues, rules, list of participants, etc. Color covers, abt. EF. Contents EF. (\$90)
- c513. **(Poster) Arrival of the Torch Relay in Teotihuacan, October 11, 1968.** Multicolor, 28.1x28.1cm (18.5"x18.5"). Large red sun over mountain. EF. (\$75)
514. **(Book) Olympics '68. The Exclusive ABC TV Sports Guidebook.** 128pp., illustrated in b&w, 20.5x27.5cm (8.1"x10.8"). Introduction, chapters on each event, and Television Scope. Color covers. EF. (\$100)
- c515. **Meeting of IOC and NOC's in Dubrovnik Badge, 1969.** Silvered bronze, 35x52mm, blue and red enameled shield between legend. With blue ribbon. EF. (\$250)
- c516. **Greek Athletics Championship in Athens, 1969. Press Badge.** Silvered, blue and green enamel, 38x36mm. With long green ribbon inscribed "PRESS". EF. (\$125)
517. **British Commonwealth Games in Edinburgh, 1970. Athletics Team Official's Badge.** Goldplated, white and blue enamel, 30x33mm. With blue ribbon inscribed in gold. EF. (\$150)

#### SAPPORO, 11th OLYMPIC WINTER GAMES, 1972

518. **Cased Participation Medal.** Bronze, 60mm, by S. Fukuda. Sapporo Olympic emblem. Rev. Two large arrows attached to stylized athlete. EF, in acrylic case. (\$750)
- c519. **Gold Soviet Team Presentation Medal for High Dignitaries.** Goldplated bronze, partially enameled in red, 60mm. Hammer and sickle Soviet emblem with red flag. Rev. "Sapporo 1972" on snowflake. EF. Rare. (\$475)
520. **Torch Bearer's Medal.** Goldplated bronze, 32x32mm. Cauldron with Olympic flame. Rev. Logo. EF, in original plastic box and paper sleeve with logo. (\$250)

521. **Volunteer's Medal.** Silvered, 43mm. Color Olympic rings over "72 Sapporo". Rev. "1972" over snowflake with Japanese legend. In bezel. EF. (\$100)
- c522. **Austrian NOC Gold Medal.** Gold, "900", 3.5 grams. Sapporo Austrian logo surrounded by 9 Olympic winter sports. Rev. Austrian NOC logo. EF. (\$175)
523. **Trio of Official Commemorative Medals.** Gold, silver and copper, 30mm. Speedskater (gold), slalom skier (silver) and ski jumper (copper). Rev. Sapporo logo and Japanese legend. All Unc, in clear plastic case and slip cover with legend in Japanese and English. (\$150)
524. **Official Figure Skating Medal.** Bronze, 50mm, by S. Kitamura. Skater on ice. Rev. Sapporo official logo. Abt. EF, in clear capital plastic holder with color logo. (\$125)
525. **Sapporo Park Hotel Medal.** Gilt aluminum, 55mm. Official logo. Rev. "Sapporo Park Hotel - Best Accommodations in Hokkaido". Holed, as made, EF. (\$75)
526. **Japanese Figure Skating Team Pin.** Silvered, red, white and blue enamel, 15x15mm. EF. (\$75)
527. **Commemorative Ski Pin.** Goldplated, 50x13mm. Sapporo logo on ski. EF. (\$75)
528. **Pair of Official Transportation Passes.** Railway Pass of Japanese National Railways, stiff blue covers, 4pp., 8x11cm (3.1"x4.3"), with embossed red and silver logo. And Subway-Street Car-Bus Pass. All valid till February 17, 1972. Both EF. (2 pcs.) (\$125)





531. **Participation Medal.** Steel, 49mm, by F. König. Munich Olympic emblem, wreath of rays with superimposed spiral, over German legend in two lines. Rev. Olympic rings over two hands, one holding stylized olive branch. EF. (\$350)
532. **IOC Badge.** Goldplated, 25x35mm. Spiral over "IOC" in white. EF. (\$1,250)
533. **Participant's Badge.** Silvered, 25x35mm. Large spiral over lavender "Athlet" on blue bar. EF. (\$200)
534. **British BBC TV Pin.** Silvered, multicolor, 24x28mm. EF. (\$100)
535. **Swiss Team Fundraising Pin.** Silvered, multicolor enamel, 30x30mm. VF-EF. (\$75)
536. **Schenker Sponsor Pin.** Silvered, green and yellow enamel, 37x13mm. EF. Scarce. (\$50)
537. **Pair of Commemorative Pins.** Silvered, partially in color, 31x33mm. Rings above legend and Munich child, attached to Edelweiss wreath. And large color Olympic rings with city shield. EF. (2 pcs.) (\$125)
539. **German Television Recognition Plaque.** Silvered, blue enamel, 45x45mm. Large spiral logo. Rev. Recognition legend. EF. (\$125)
540. **Large Iraq NOC Presentation Plaque.** Silvered and multicolor enamel, 15.7x10.8cm (6.2"x4.3"). Colorful Iraq NOC logo besides palm branch, stadium in background, sports equipment (soccer ball, tennis racket, boxing glove, bicycle wheel, etc.) at left. In presentation case lined in velvet and silk. EF. (\$150)
541. **Italian NOC Merit Medal, ND.** Silvered, 40mm by Greco. Bust of athlete with torch, head facing r. Rev. Italian NOC logo. In a dark blue wallet with silver CONI logo. Unc. (\$125)
542. **Cased Morocco National Olympic Committee Medal.** White metal, rings enameled in color, 64mm. Crown over rings encircled by legend in English, French and Arabic language. Toned EF, in red case. (\$100)
543. **Large Commemorative Portuguese Medal.** Bronze with original green patina, 80mm. Winner with laurel wreath in quadriga I. Rev. Abstract design and quote of Olympic Odes by Pindar. EF. (\$150)
544. **Commemorative Olympic Stadium Gold Medal.** Gold, "999.99", 26 mm, 8 grams, signed "HH". View of Munich. Rev. Aerial view of the Olympic site with stadium and tower. EF. (\$350)
545. **Torchrunners Commemorative Gold Medal.** Gold, "900", 20mm, 3.5 grams. Five torchrunners r., Munich shield below. Rev. Logo. Starting to tone on rev. EF. (\$150)
546. **Commemorative Olympic Cauldron and Discus Thrower Medal.** Gold, "585", 20mm, 2.5 grams. Cauldron and discus thrower surrounded by legend. Rev. Famous towers of Frauenkirche. EF. (\$100)
547. **Trio of 1972 Olympic Games Medals.** Silver, 35mm, made by Intercoin. Sapporo Winter Games: Logo. Rev. 3 skiers. Munich: Olympic stadium roof. Rev. Discus thrower. And Kiel: Sailing boats. Rev. Legend and rings. Proof, FDC, cased, with certificate. (\$100)
548. **Olympia Munich 1972 Commemorative Medal.** Silver, "1000" 50mm. Laureated athlete's head l. Rev. View of Munich in open wreath. Proof, Unc. (\$100)

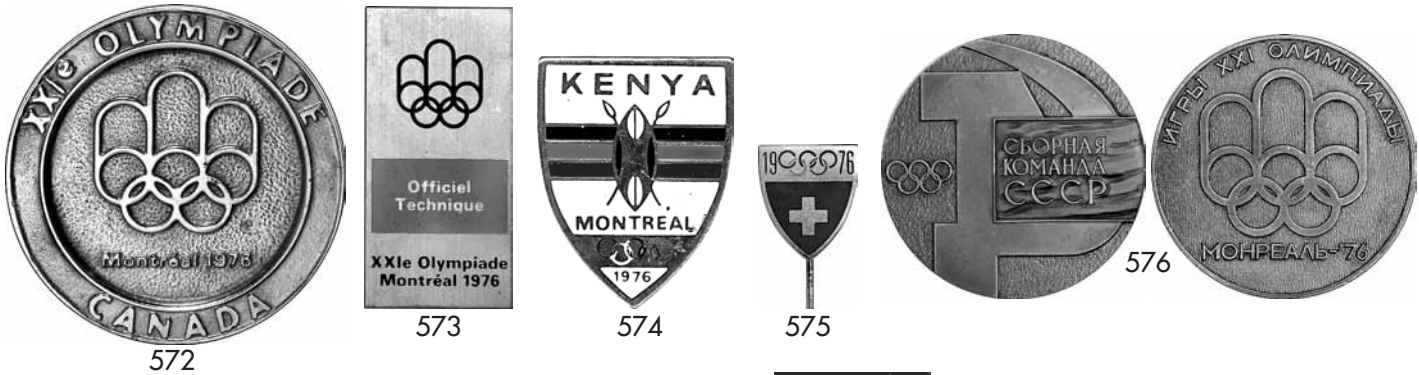
**Please Bid Early!**





549. **Kiel Olympic Yachting Venue Commemorative Medal.** Silver "1000", 40mm. View of yachts with Olympic legend. Rev. View of Kiel, Olympic rings below. EF. (\$75)
550. **Commemorative Olympic Games 1972 Medal.** Bronze, 50mm. Three runners r. Rev. Torch with flame behind "München". EF. (\$75)
551. **Commemorative Logo Medal.** Goldplated, 60mm. Large spiral logo. Rev. 5 runners r. on wavy background. EF. (\$75)
552. **Commemorative Plaque, 1972.** Cast iron, 16.8x11.6cm (6.6"x4.6"), designed by Mootz. Munich landmarks with Olympic Tower, Olympic legend and rings below. EF. (\$100)
- c553. **Steff Wooden Mascot Waldi.** Multicolor, 33.5cm (13.2") long. Lt. wear, abt. EF. Very scarce. (\$200)
554. **Moveable Black Metal Mascot Waldi.** Black colored metal, 26.5cm (10.4") long. Moveable gold ears and tail, with cord. EF. (\$75)
555. **Large Commemorative Lighter with Logo and City View.** Chrome-plated, 56x32mm. Blue logo between "München - 1972". Rev. City view. EF. (\$100)
556. **Commemorative Lighter with Logo and City View.** Chrome-plated, 40x42mm, made by Ibelo, W. Germany. Blue logo and date. Rev. City view and coat of arms. EF. (\$100)
557. **Pair of Commemorative Porcelain Vases.** Goldplated, 15.9cm (6.3") tall, made by Royal Porcelain Bavaria KPM. Handpainted Munich child with rings and landmarks. And black and white design vase, 14cm (5.5") tall. City view between Olympic rings and legend. EF. Nice pair. (2 pcs.) (\$125)
- c558. **Commemorative Porcelain Vase.** Multicolor, 18cm (7.1") high, made by Jaeger & Co., Bavaria. View of Olympia Tower, rings above. Helmeted Munich child coat of arms on back. EF. (\$100)
559. **Commemorative Ice Cube Pail.** Clear glass with blue design and logo, silver rim and handle, 11cm (4.3") high, made by WMF, Germany. EF, in original box. (\$100)
- c560. **Second All-Africa Games in Lagos, 1973. Team Official's Badge.** Silvered, green enamel, 40mm. Suspended from "Team Official" bar and blue ribbon. EF. Scarce. (\$150)
- c561. **Ice Hockey World Championship in Moscow, 1973. Official's Badge.** Bronze, blue and red enamel, 37x46mm. EF. (\$125)
562. **25th Anniversary of the German National Olympic Committee Medal, 1974.** Silver, 50mm, by G. Marcks. Twins Castor and Pollux, patrons of competitive sport and friendship, as on Munich 1972 winner's medal. Rev. 7-line legend and Olympic rings. Presented to a silver medal winner from Helsinki 1952. Unc., in clear acrylic case. EF. Rare. (\$200)
563. **Seventh Asian Games in Teheran, 1974. Press Badge.** Silvered, edge gold, 44mm. Suspended from "Press" bar with red ribbon. Abt. EF. (\$150)
564. **Trio of Soccer World Cup in Germany Silver Medals, 1974.** Silver, 35mm, by Intercoin. Jules Rimet trophy. Rev. Soccer ball in laurel wreath. Plus Names of 9 German soccer matches cities. Rev. Munich stadium. And 3 Soccer players. Rev. "DFB" above soccer ball. Proof, Unc., boxed. (\$125)
565. **76th IOC Session in Lausanne, 1975. Official Medal.** Goldplated bronze, 45x60mm, by Huguenin. Official logo. Rev. Olympic rings above legend. EF, boxed. (\$175)





- INNSBRUCK, 12th OLYMPIC WINTER GAMES, 1976**
566. **Cased Participation Medal.** Silvered bronze, 50mm, by W. Pichl. Innsbruck Olympic emblem on ice crystals within German legend. Rev. Bergisel ski jump, panorama of Innsbruck and Austrian Alps in background. Toned EF, in presentation box. Scarce in this condition. **(\$450)**
- c567. **Commemorative Gold Medal.** Gold, "900", 20mm, 3.5 grams. Innsbruck city view. Rev. Logo. Reeded edge. EF. **(\$175)**
- c568. **Austrian Team Pin.** Goldplated, blue enamel, 29x25mm. EF. **(\$80)**
569. **Sponsor Honeywell Bull Computer Service Badge.** Silvered, red and blue enamel. EF. Scarce. **(\$100)**
- c570. **Official Large Snowman Mascot.** Abt. 21cm (8.3") tall, 25cm (9.8") wide. Smiling felt-covered snowman welcoming visitors with open arms. EF, in pictorial original box. Very scarce. **(\$350)**

- MONTREAL, 21st OLYMPIC GAMES, 1976**
571. **Cased Participation Medal.** Copper, 45mm, by G. Huel and P. Pelletier. Montreal Olympic stadium over French legend in two lines. Rev. Montreal Olympic emblem, a stylized "M" above Olympic rings. EF, mottled toning, in leather case (lt. hdlg.). **(\$375)**
572. **Model for the Participation Medal.** Copper-nickel, 80mm (by P.-Y. Pelletier). Montreal logo over "Montreal 1976", surrounded by "XXIe OLYMPIADE CANADA". Rev. "Copyright 72 COJO 1976". EF. Unique. **(\$375)**
573. **Technical Official's Badge.** Cupro-nickel, 28x56mm, red and gray enamel. EF. **(\$200)**
574. **Kenya Team Pin.** Multicolor, 26x34mm. EF. **(\$75)**
575. **Swiss Team Pin.** Silvered, red enamel, rings in color, 13x15mm. EF. **(\$25)**
576. **Soviet Team Medal.** Bronze, 60mm. Soviet hammer and sickle, red enameled flag. Rev. Montreal logo. Toned EF. **(\$100)**

577. **The Canadian Olympic Medal of Unity.** Bronze, 47mm. Red enameled maple leaf in center which contains earth from all Olympic sites as well as from each Canadian province and territory. Rev. Maple leaf with color rings in center. EF. **(\$100)**
- c578. **Small Black and Red Amik Mascot.** Plastic, 13cm (5.1") long. White logo on red sash. EF. In original box. **(\$150)**
- c579. **Small White and Red Amik Mascot.** Plastic, 13cm (5.1") long. White logo on red sash. EF, in original box. **(\$150)**
- c580. **Tall Hostess Doll.** 38.3cm (15.1") tall. Hostess wearing red suit with multicolor striped shirt and head scarf. With gilt Montreal logo pin on jacket. EF. **(\$150)**
581. **Commemorative Montreal 1976 German Gold Medal Winners Pewter Cup.** 8.5cm (3.3") high, made in Nürnberg. Three panels: Olympic rings between legend; equestrian, fencing and yachting gold medal winners with names including Thomas Bach, IOC Vice President, and four more sports. EF. **(\$125)**
582. **(Brochure) The Olympic Village Takes Shape.** Published by the Organising Committee. 80pp. illustrated, 10.7x20.8cm (4.2"x8.2"), in French and English. Everything about the Olympic Village! EF. **(\$75)**
583. **Official Report.** Text in English. 3 volumes. Vol. 1: Organization, 618pp.; Vol. II: Facilities, 239pp.; Vol. III: Results, 698pp. Profusely illustrated, in red slipcase. (3 vols.) EF. **(\$550)**
584. **1978 Soccer World Cup in Buenos Aires, Argentina Commemorative Medal.** Bronzed white metal, 80mm. South American continent and World Cup trophy. Rev. List of soccer champions since 1930, encircled by flags of participating nations. EF. **(\$80)**

**Please Bid Early!**