

259. **Commemorative Silver Ring.** Sterling silver, size 6½. Legend on front flanked by runner at start l. and swimmer on r. Toned EF. (\$250)
260. **Souvenir of the Xth Olympiad Knife with Sheath.** Total length 16.3cm (6.4”), made in Finland. Engraved bakelite part of handle, bronze horse’s head at top. Leather sheath with engraved bronze part. Abt. EF. (\$125)
- c261. **Large Official Logo Banner of the Xth Olympiad 1932.** Multicolor linen, 87.3x115.3cm (34.4”x45.4”). Official logo with Olympic motto over “1932 X OLYMPIAD”. VF-EF. (\$1,250)
- c262. **Commemorative Olympic Bell Bamboo Wall Hanging.** Blue bell on red background with Olympic rings and logo in color. 36.5x53.5cm (14.4”x20.8”). EF. (\$125)
- c263. **Commemorative Los Angeles City Hall Bamboo Wall Hanging.** Silver and black on dark blue background with “10th OLYMPIAD” in red. 36.5x53.2cm (14.4”x20.9”). *The city hall was the tallest building in Los Angeles at the time.* EF. (\$125)
- c264. **Child’s Commemorative Equestrian Olympic Kimono.** Multicolor cotton, abt. 65cm (25.5”) long. Equestrian, trophy and Olympic rings design. Frayed in some spots, VF. (\$175)
265. **Interesting Group of an American Bronze Medal Winner in Pentathlon, Richard W. Mayo. Identity Card, 4pp., 9.1x13.2cm (3.6”x5.2”), with photo. Crease, VF-EF. Program August 14, 1932, Closing Ceremony, including victory list with Mayo’s name, VF+. Photo with Mayo’s name on announcement board, crease, VF-EF, and his IOC 1932 Los Angeles Participation Pin in Wallet, EF. (4 pcs.) (\$500)**
266. **Olympic Stadium Pass in Wallet.** Valid for all Events of the Xth Olympiad held in the Stadium. Green, 14.5x8.7cm (5.7”x3.4”). In light brown leather wallet. EF. (\$200)

267. **Fold-Out Brochure Prepared by the Hostesses of the Tenth Olympic Games.** Fold-out in 16 sections, 28x36.8cm (11”x14.5”), with printed games logo and mailing envelope front. List of members of women’s hospitality group throughout America, games and art competition information, program, and invitation to Women of all Nations to attend the Games. VF-EF. Scarce. (\$100)
268. **Group of Four Los Angeles 1932 Photographic Postcards** featuring the Olympic Stadium (3) and American Athletes boarding buses to the Olympic Village at the Stadium (2 color, 2 b&w). Plus **Garmisch 1936 photographic Postcard of Ski Jump** with flags, by Hoffman. Abt. EF to EF (5 pcs.) (\$100)
269. **Denmark Seal for the Xth Olympic Games 1932 Los Angeles.** Red and blue joint country flags, 8.6x15.5cm (3.4”x6.1”), between legend. EF. (\$75)
270. **(Brochure) Xth Olympiad Souvenir Edition. Pictorial California.** 32pp. illus. Venues, Events, Southern California. Covers blue and red, lt. wear, contents EF. (\$150)
271. **Official Report. Los Angeles 1932.** Published by the Organizing Committee. 815pp. illus. in b&w and color, many color plates. Linen, orange and black embossed design. EF. (\$650)
272. **(Magazine) Die Woche. The Week.** Berlin, April 28, 1934. 42pp. illus., 25x32.4cm (9.8”x12.8”), in German. Includes 4-page illus. article on worldwide soccer. Color covers creased, VF-EF. (\$100)
273. **British Empire Games, London, 1934. Official Medal.** Bronze, 45mm. Victory with wreath at portal. Rev. Open laurel wreath. EF, in presentation case. Plus **Competitor’s Badge**, goldplated, 39x40mm, EF, and **British Amateur Boxing Association Official’s Badge at the 1934 Empire Games.** All EF (3 pcs.) (\$1,000)



275



276



277



278



280



281



282



283



285



286



- c274. **British Empire Games, London, 1934. Guest Badge.** Goldplated, 30x40mm, made by E. Phillips. British lion left on panel with inscription. With green silk ribbon inscribed "Guest", and bar. EF, in original box. (\$250)
275. **Second National Workers Exposition in Brussels, 1935.** Bronze, 64mm. High relief bust l. of ancient warrior. Rev. 8-line French legend. Abt. EF/VF+. (\$100)

**GARMISCH-PARTENKIRCHEN, 4th OLYMPIC WINTER GAMES, 1936**

276. **Boxed Participation Medal.** Bronze, 60mm, by M. Joerres. Alpine summit over Olympic rings within German legend. Rev. Olympic motto over fir branches. In original red cardboard box lined in blue velvet and silk. EF. Very scarce with original box. (\$2,000)
277. **Participation Medal.** Bronze, 60mm, by M. Joerres. Alpine summit over Olympic rings within German legend. Rev. Olympic motto over fir branches. EF. (\$1,750)
278. **Official Visitor's Pin.** Silvered, partially enameled, 35mm. Official logo featuring Alpspitze mountain. EF. (\$125)
- c279. **Handpainted Commemorative Porcelain Plate.** Multicolor, 21.5cm (8.5"), painted by M. Fink, Rosenthal Manufactory, Selb. Color view of Alpspitze mountain, emblem of the games, gold legend and border. EF. Rare. (\$850)
280. **Official 16mm Ozaphan Film Featuring Figure Skaters Sonja Henie, Norway, Gold and Cecilia Colledge, Great Britain, Silver, at the 1936 Winter Olympics.** In red container, 80mm (3.1"). Lt. wear on container. (\$200)
281. **Austrian Curling Participant's Portfolio.** Cardboard, edges brown linen, 26x17.5cm (10.2"x6.9"). Competitor's name and number in brown ink on front. A. Ritzl was a member of the Austrian Curling Demonstration Team who won gold. EF. (\$225)
282. **Set of 12 Photos by B. Johannes, Garmisch-Partenkirchen.** 7x9cm (2.8"x3.5"). Olympic Oath at Opening Ceremony, A. Hitler, gold medal winners Sonja Henie, Christl Cranz, Birger Ruud, Franz Pfnür, the Pausins, Closing Ceremony, etc. In pictorial cover (worn). (\$100)



287

283. **Complete Bound Set of 12 Official Olympic Newspapers, February 5 to February 16, 1936.** In German language, captions of the many photos in German, English and French, 29x38.9cm (11.4"x15.3"). Reports on every day, all events. Browning on edges, o.w. VF-EF. Housed in pictorial boards, VF. (\$200)
- BERLIN, 11th OLYMPIC GAMES, 1936**
- c284. **Bronze Third Place Winner's Medal.** Bronze, 55mm, by Cassioli. Victory seated above stadium. Rev. Winner carried by jubilant teammates. Toned EF. (\$6,000)
285. **Participation Medal.** Cast bronze, 70mm, by O. Placzek. Five athletes representing the five continents, pulling the ropes of the Olympic Bell. Rev. Olympic Bell embossed with German Eagle holding Olympic rings, within five concentric circles. *The Berlin participation medals were made by 5 different manufactories. Each one applied a different patina.* **Brown patina, EF. (\$400)**
286. **Participation Medal.** As preceding medal but **brown-green patina.** *The Berlin participation medals were made by 5 different manufactories. Each one applied a different patina.* EF. (\$400)
287. **Official City of Berlin Olympic Games 1936 Presentation Medal.** Cast bronze, 9.3cm (3.7"). High relief mural crowned city shield surrounded by German legend: "The Reich Capital Berlin for the Olympic Games 1936" (transl.). Rev. Swastika above Olympic rings and Brandenburg Gate, 8-line German legend. Presented to Olympic Medal Winners. EF. Scarce. (\$500)



288



289



291



292



293



294



295



296



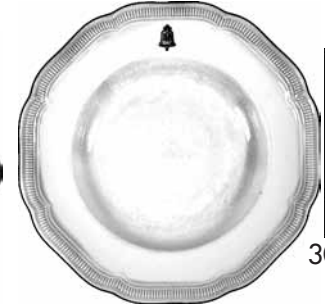
297



298



301



302



288. **Mayor of Stuttgart Presentation Plaque to Indian Hockey Team, Gold Medal Winner in Berlin, 1936.** Bronze, 51x70mm, by Mayer & Wilhelm. Horse above Schillerplatz. Rev. 12-line legend. *Plaque was presented at a post-Olympics game on Sept. 13, 1936.* EF, in presentation case (trace of removed tape on back). Very scarce. (\$425)
289. **Official Badge for Previous Olympic Games Winners.** Silvered bronze, partially enameled, 27x33mm. Winner holding wreath, color Olympic rings over Brandenburg Gate in background, 2 white enameled bars for name below. *Previous Olympic winners were invited to attend the Berlin Olympic Games.* EF. (\$450)
- c290. **Yellow Badge of the German Youth Sports Camp During the First Week of the Olympic Games.** Silvered center with yellow rosette, 37mm. Official Guide p. 65. EF, with original envelope. (\$300)
291. **Orange Badge of the German Sports Students Camp during the Olympic Games.** Silvered center with orange rosette, 37mm. VF-EF. (\$250)
292. **American Olympic Team Badge "1".** Cream silk with dark blue design, 5.1x12.6cm (2"x5"), made by Kraus & Sons, New York. "1936 American Olympic Team 1", ornate border in Greek style at top. Small original safety pin rev. top. Ex: R. Mayo. EF. Rare. (\$400)
293. **Swedish Team Pin for Garmisch and Berlin Games.** Goldplated, 23x22mm. Blue and yellow enameled flag, "1936" date on back. EF. (\$175)
294. **Swiss Team Fundraising Pin for Berlin 1936.** Silvered, 26x26mm. On red felt, prongs on back. EF. (\$100)
295. **Yugoslavia Team Pin.** Silvered, 16mm. EF. Very scarce. (\$225)
296. **Official Visitor's Pin.** Goldplated iron, 30x33mm, cream-colored enamel. Brandenburg Gate with "1936 - XI. Olympiade Berlin" over Olympic rings. EF, sm. spots. (\$100)
297. **Commemorative Olympic Bell Pin.** Silvered, 22x24mm. Toned EF. (\$100)
298. **(Car Plaque) International Olympic DKV Auto Rally to the Berlin Olympic Games 1936. Official Car Plaque.** WM, 45x50mm. Brandenburg Gate over Olympic rings, 5 roads ending below. With 3 nails on back. VF, partially lacquered. Very rare. (\$175)
- c299. **(Autograph) The Ancient Olympic Games. Presentation Set of Six Bronze Reliefs by German Sport Leader von Tschammer und Osten.** Cast bronze, 14.4x16.5cm (5.7"x6.5") each. The 6 reliefs can be displayed harmonica-style. They are housed in a book-like case. They illustrate the Six Days of Ancient Olympic Games, from Greek vases. **1st Day:** Opening of the Games; **2nd Day:** Competitions of Young Boys; **3rd Day:** Competitions of Men; **4th Day:** Rest; **5th Day:** Main Competitions; **6th Day:** Winners Ceremony and Banquet. Attractive and scarce set (6 pcs.). EF. Plus **Letter by Tschammer und Osten** on his Reichsportführer letterhead to a British host during Great Britain-Germany Swimming Competition, dated August 17, 1937, and **signed in ink.** Letter has tape on back, creased. (Presentation Set and Letter) (\$2,500)
- c300. **Bermuda Olympic Team Gold Ring.** 8 Karat Gold, "333", 4.5 grams, size 9-1/2. Brandenburg Gate over Olympic rings, "BERMUDA OLYMPIC TEAM BERLIN 1936" around ring, name of swimmer inside. EF. Rare. (\$975)
301. **Japanese Female Team Kimono Pin (Obi-Dome).** Silvered brass, 40x42mm. Large Berlin Olympic bell. Rev. Japanese legend with name. Toned EF. Very rare. (\$375)
302. **Olympic Village Soup Plate.** White porcelain, 24.5cm, made by Hutschenreuther, Selb. Scalloped edge, brown Olympic bell with eagle and Olympic rings on edge. *Used in the Olympic Village during the 1936 Games.* EF. (\$250)
- c304. **Porcelain Eagle Commemorating the Berlin Olympiad.** White Fürstenberg porcelain, 11.7cm (4.6"). German eagle with outstretched wings perched on pedestal with color Olympic rings on front, and "OLYMPIADE/BERLIN/1936" in back. EF. Rare and beautiful. (\$475)

Please Bid Early!



305



306



307



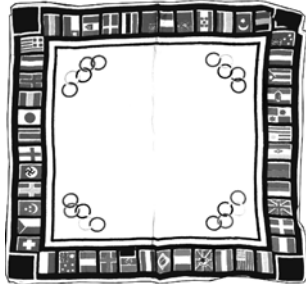
309



311



313



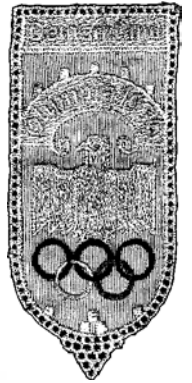
314



315



316



317



318



319



320



321

305. **Olympia Fundraising Porcelain Bell of the German Sports Help Association.** White porcelain, 10x10.8cm (3.9"x4.3"). German Eagle with Olympic rings and Brandenburg Gate around sides, Olympic Games legend and date around bottom. With affixed paper of the German Sport Help Association at the bottom. Numbered. Rare. (\$275)
306. **Commemorative Porcelain Ashtray.** 13.5x12cm (5.3"x4.7"), Alt Schönwald, Bavaria Porcelain. Handpainted color rings between "Berlin 1936". Traces of edge gilding. EF. (\$175)
307. **Commemorative Berlin Olympiad Porcelain Cup.** Translucent porcelain, handpainted, 85mm (3.3") wide. Red and black helmeted Berlin shield, color Olympic rings on either side. Goldplated edges and handle. EF. (\$150)
- c308. **Commemorative Entry to the Olympic Stadium Ceramic Plate.** Multicolor, handpainted, 18.6cm (7.3"). View of entry into Olympic Stadium, Olympic rings between towers. EF. (\$175)
309. **Commemorative Olympic Bell Glass Ashtray.** Massive clear glass, 11.5x11.5cm (4.5"x4.5"). Olympic bell between "19-36" engraved in center. VF-EF. (\$175)
- c310. **Large Colorful Flags of Participating Nations Banner.** Multicolor linen, 77x153.2cm (30.3"x60.3"). Olympic Games legend within flags and Olympic flag. Frayed in sm. spots, overall VF-EF. Rare. (\$675)
311. **Color Silk Table Pennant with Flags of the Participating Nations.** Silk, 16x27cm (6.3"x10.6"). Flags of 50 participating nations and Berlin Olympic legend. With wooden rod and string at top. Lt. browning, EF. Scarce in silk. (\$225)

- c312. **Commemorative Olympic Rings and Flags of Participating Nations Scarf.** Multicolor linen, 69x60cm (27.2"x23.6"). Set of 4 Olympic rings in center surrounded by 55 flags of participating nations on black background. Professionally repaired in one spot, sm. frayed spots, abt. EF. Rare scarf. (\$150)
313. **Commemorative Silk Scarf.** Triangular, 101.5x41.2cm (40"x16.2"). Large color Olympic rings in center. EF. (\$150)
314. **Commemorative Flags of Participating Nations Handkerchief.** Multicolor silk, 32x30cm (12.6"x11.8"). Flags of nations around outside, Olympic rings in corners. EF. (\$100)
315. **Commemorative Berlin Brandenburg Gate Lace Doily.** 16cm (6.3"). Brandenburg Gate under Olympic rings and "OLYMPIADE 1936" within flower lace border. EF. (\$150)
316. **White Lace Doily Featuring Reichstagsgebäude in Berlin.** 15.6cm (6.1"). Rings and Olympic legend over German Seat of Government in ornate flower border. EF. (\$150)
317. **Embroidered Silk Bookmark.** Ivory silk with yellow legend, 4.7x10.5cm (1.9"x4.1"). Eagle with Olympic rings in color. EF and scarce. (\$100)
318. **Olympia 1936 Wooden Plaque.** 18.2x9.5cm (7.2"x3.7"), made by Elze & Hess, Gera. Olympic rings above "Olympia 1936". EF. (\$150)
319. **Commemorative Boxing Sculpture.** Cast bronze, 9.7x15.9cm (3.8"x6.3"), by Martin & Piltzing, Berlin. Three-dimensional boxer to the right in fighting position. *Made for sale during the 1936 Olympic Games in Berlin.* A few spots, o.w. EF. (\$200)
320. **Olympic Scarf Clip.** Chromeplated, triangular, 55x38mm. Large Olympic rings. Toned EF. (\$175)
321. **Commemorative Mesh Coin Purse Presented to Dignitaries' Wives in Berlin 1936.** Brass, top with color Olympic rings. VF-EF. (\$200)