



22



23



24



25



27



28



29



30



33



34



35



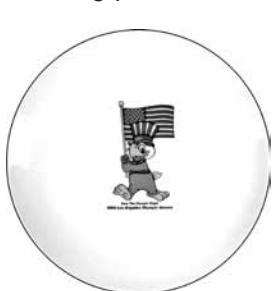
38



40



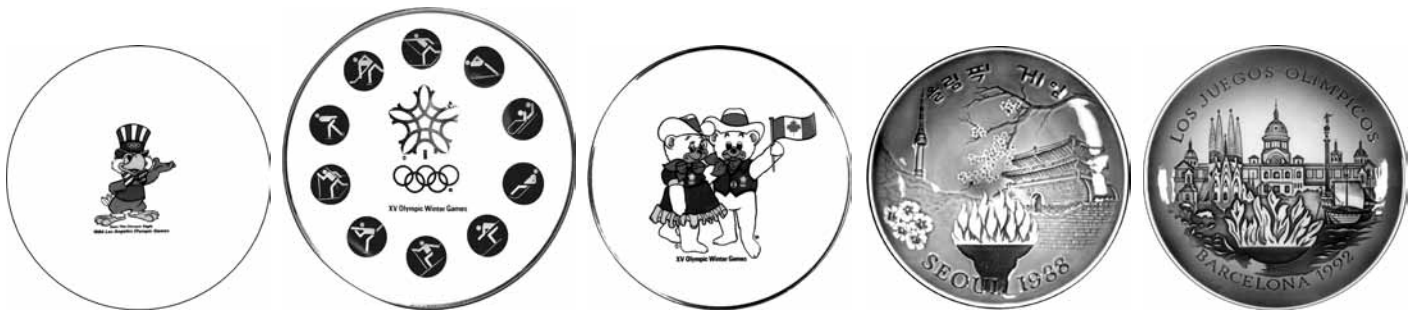
41



42

- c21. **Munich 1972. Greetings from Olympic City Porcelain Plate.** Multicolor, partially goldplated, 23.4cm (9.2''), by Bavaria Porcelain. Olympic tower with rings encircled by München landmarks, in ornate gold grapevine border. EF. (\$100)
- 22. **Munich 1972. München-Metropolis with a Heart Plate.** Blue porcelain with gilt legend, 19cm (7.5''), by Goebel, Bavaria. Skyline in relief. EF. (\$100)
- 23. **Munich 1972. Commemorative Olympic Flame Blue and White Porcelain Plate.** 18.5cm (7.3''), made by Bing & Groendahl, Copenhagen, first issue. Large Olympic flame, Munich skyline in back. EF. (\$100)
- 24. **Munich 1972. Commemorative Porcelain Discus Thrower Plate.** Cobalt blue, 19.3cm (7.6''), by Berlin Design. Discus thrower, Olympic stadium and Munich landmarks in background. EF. (\$100)
- 25. **Munich 1972. Commemorative Blue and White Olympic Athletes Dutch Porcelain Plate.** 19.2cm (7.5''). Torchbearer and athletes, Munich skyline in background. EF. (\$100)
- c26. **Munich 1972. Olympiad in Bavaria Humoristic Porcelain Plate.** Waitress Carrying Beer Steins. Multicolor, 27cm (10.5''), by Seltmann. EF. (\$100)
- 27. **Munich 1972. Commemorative Olympiad 1972 Porcelain Plate.** Blue and white, 19.5cm (7.7''), made by Winterling, Bavaria. Munich skyline with Olympic rings, legend above. EF. (\$100)
- 28. **Munich 1972. Commemorative Theatiner Church Porcelain Plate.** Gold and black, 19.2cm (7.6''), by Hutschenreuther. Theatiner Church surrounded by Olympic legend. VF+. (\$65)
- 29. **Montreal 1976. Discus Thrower Porcelain Plate.** Blue and white, 20.2cm (8''), by Royal Copenhagen. Discus thrower over Montreal logo on globe. EF. (\$100)
- 30. **Lake Placid 1980 Winter. Official 1980 Olympic Winter Games Plate.** Multicolor, 21.6cm (8.5''), by A. Tobey, Viletta porcelain. View of all 1980 Olympic winter sports, logo below. Numbered. EF. (\$100)
- c31. **Moscow 1980. Beautiful Large Porcelain Plate.** Multicolor and gold, 31cm (12.2''). Moscow logo in center surrounded by flower design. EF. (\$225)

- c32. **Moscow 1980. Commemorative Mascot Misha Porcelain Plate.** Brown and gold, 19.6cm (7.7''). Smiling Misha wearing color Olympic belt surrounded by brown and gold ornate border. EF. (\$125)
- 33. **Moscow 1980. The Official 1980 Summer Olympic Games Plate.** Viletta porcelain, 21.5cm (8.5''), designed by A.S. Tobey. Color Olympic events, Moscow logo in red. EF. (\$100)
- 34. **Moscow 1980. Commemorative Olympic Flame Blue and White Porcelain Plate.** 18.3cm (7.1''), by Bing & Groendahl. Large Olympic flame in front of Moscow skyline. EF. Scarce. (\$100)
- 35. **Moscow 1980. Commemorative Blue and White Porcelain Plate.** 19.4cm (7.6''), made by Berlin Design. View of Kremlin Basilica, Olympic rings and date below. EF. (\$100)
- c36. **Moscow 1980. Official Logo Porcelain Plate.** Orange and gold, 17.5cm (6.9''), maker's mark on back. Logo in center surrounded by orange and gold circles. EF. (\$75)
- c37. **Sarajevo 1984 Winter. Commemorative Olympic Figure Skating Porcelain Plate.** Multicolor, 21cm (8.3''). Figure skater in various poses. EF. (\$100)
- 38. **Los Angeles 1984. Commemorative City View with Cauldron Porcelain Plate.** Blue and white porcelain, 18.3cm (7.2''), by Bing & Groendahl. Large Olympic flame before Los Angeles skyline. EF. Rare. Key plate of the series. (\$250)
- c39. **Los Angeles 1984. British Olympic Team Runners Porcelain Plate.** Multicolor, 26cm (10.2''), by Royal Tudor. Four runners in stadium surrounded by legend, British NOC logo on top between cauldrons with Olympic fire. EF. (\$150)
- 40. **Los Angeles 1984. Stars in Motion - Official Logo Color Porcelain Plate.** 23.8cm (9.4''), made by Papel, designed by R.M.Runyan. EF. (\$100)
- 41. **Los Angeles 1984. Mascot Sam the Olympic Eagle with Torch Porcelain Plate.** Multicolor, 20.6cm (8.1''), by Papel. Sam holding torch. EF. (\$80)
- 42. **Los Angeles 1984. Mascot Sam the Eagle Carrying the American Flag Porcelain Plate.** Multicolor, 21.5cm (8.5'') by Papel. Smiling Sam carrying the American flag. EF. (\$80)



43

44

46

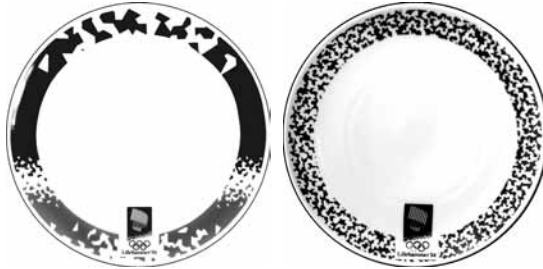
47

50



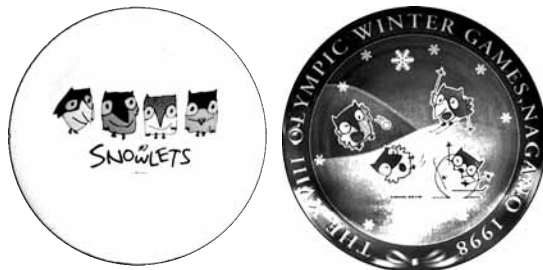
51

52



53

54



55

56

43. **Los Angeles 1984. Mascot Sam the Olympic Eagle Plate.** Porcelain, multicolor design, 20.7cm (8.1"), by Papel. Sam the Eagle presenting Games. EF. (\$80)
44. **Calgary 1988 Winter. Olympic 1980 Winter Sports Pictogram Plate.** Porcelain, black and gold design, 21.6cm (8.5"), by TSC. Logo in center surrounded by 10 winter events in Calgary. Edge trimmed in gold. Limited edition, numbered. EF. (\$125)
- c45. **Calgary 1988 Winter. Mascots Hidy and Howdy Porcelain Plate.** Multicolor, 21.6cm (8.5"), made by TSC. Smiling mascots, Howdy waving Canadian flag, edge trimmed in gold. EF. (\$100)
46. **Calgary 1988 Winter. Mascots Hidy and Howdy Porcelain Plate.** As preceding plate but 18cm (7.1"). EF. (\$80)
47. **Seoul 1988. Olympic Flame Commemorative Porcelain Plate.** Blue and white, 18.3cm (7.2"), by Bing & Groendahl. Olympic flame before Seoul landmarks. EF. Scarce. (\$125)
- c48. **Seoul 1988. Commemorative Yachting Porcelain Plate.** Multicolor, 20.4cm (8"). Smiling Hodori mascot in yacht, Korean legend on back. EF. (\$100)
- c49. **Albertville 1992 Winter. Commemorative American Team in Albertville Porcelain Plate.** 21.5cm (8.5), by Anheuser-Busch. Olympic flame surrounded by winter events. EF. (\$100)
50. **Barcelona 1992. Official Commemorative Olympic Games Porcelain Plate.** Blue and white porcelain, 18.3cm (7.2"), made by Bing & Groendahl. Olympic flame in front of Barcelona skyline. EF. (\$100)

51. **Lillehammer 1994 Winter. Olympic Ballet Blue and White Porcelain Plate, 1992.** 17.5cm (6.9"), made by Porsgrund. Ancient Greek leading biga, Olympic rings below. "Olympiaballet 1992" on back. EF. (\$100)
52. **Lillehammer 1994 Winter. Norwegian Olympic Committee Porcelain Plate.** Blue and white Porsgrund porcelain, 17.6cm (6.9"). Two medieval warriors, the Birkebeiner, carrying baby king to safety, color rings below. EF. (\$150)
53. **Lillehammer 1994 Winter. Commemorative Northern Lights Porcelain Plate.** Light and dark blue design, 20.5cm (8.1"), made by Porsgrund Porcelain Manufactory. Dark and light blue Northern lights, logo at bottom. EF. (\$90)
54. **Lillehammer 1994 Winter. Commemorative Northern Lights Porcelain Plate.** Blue and white, 20.6cm (8.1"), made by Porsgrund. Logo with color rings within light blue Northern Lights border. EF. (\$90)
55. **Nagano 1998 Winter. Commemorative Mascots Snowlets Porcelain Plate.** Multicolor Yamaka porcelain, 20cm (7.9"). Four snowlet mascots. EF. (\$100)
56. **Nagano 1998 Winter. Commemorative Blue and White Mascots Plate.** Porcelain, 25cm (8.8"), by Hachijuni Bank. Four Nagano Snowlet mascots on ski hill surrounded by legend. EF. (\$100)
- c57. **Sydney 2000. Commemorative Logo Porcelain Plate.** 19.5cm (7.8"), by Lush Creations. Sydney 2000 logo in yellow border. EF. (\$100)
- c58. **Sydney 2000. Wedgwood Commemorative Logo Porcelain Plate.** Orange and brown, 20.2cm (8.7"). Logo in center surrounded by ancient Greek runners. EF. (\$100)
- c59. **Sydney 2000. Commemorative Mascot Syd Porcelain Plate.** 20.5cm (8.1"). Multicolor Syd, waving, over Sydney 2000 and McDonald logos in green border. EF. (\$100)
- c60. **Athens 2004. Pair of Commemorative Porcelain Plates.** Both 21cm (8.3"), by Efsimon. "Olympia 2004" around logo, lt. and dark blue. And "Athens 2004 Olympic Games" within legend, blue and grey. EF. (2 pcs.) \$175

#### POSTERS OF THE OLYMPIC GAMES

- c61. **Paris 1900. Very Large Official Poster for the Olympic Fencing Event.** Lithograph, designed by Jean Pal, printed by Chardin, Paris, 111.7x157.5cm (44"x62"). A female fencer holding foil, épée and saber over program of the Olympic fencing event. *Women didn't compete in fencing till Paris 1924.* Very rare, and one of the first Olympic posters. Lined on linen, EF. (\$6,250)
- c62. **Stockholm 1912. Official Poster in Hungarian Language.** 75x105cm (29.1"x41.3"), designed by Olle Hjörtzberg, Swedish Professor at the Royal Academy of Fine Arts, printed by A. Bortzells, Stockholm. Nude young men waving flags of participating nations, legend in Hungarian below. *At the time, the design was considered too daring by some countries, and the poster and seals with this design were not distributed in the respective countries.* Olympism p. 20/21. EF, a few marginal tears, lined on linen. Very scarce poster. (\$5,000)
- c63. **XXth Anniversary of the Restoration of the Olympic Games Poster, 1914.** Lithograph, 72.3x102.5cm (28.5"x40.4"), designed by E. Elzingre, printed by Affiches Atar, Geneva. Victorious athlete on horseback holding statue of Victory, horse led by 2 young boys. Olympism p. 153. Creased, lined on linen, VF-EF. Bright colors, beautiful poster. (\$2,000)



72



76



79

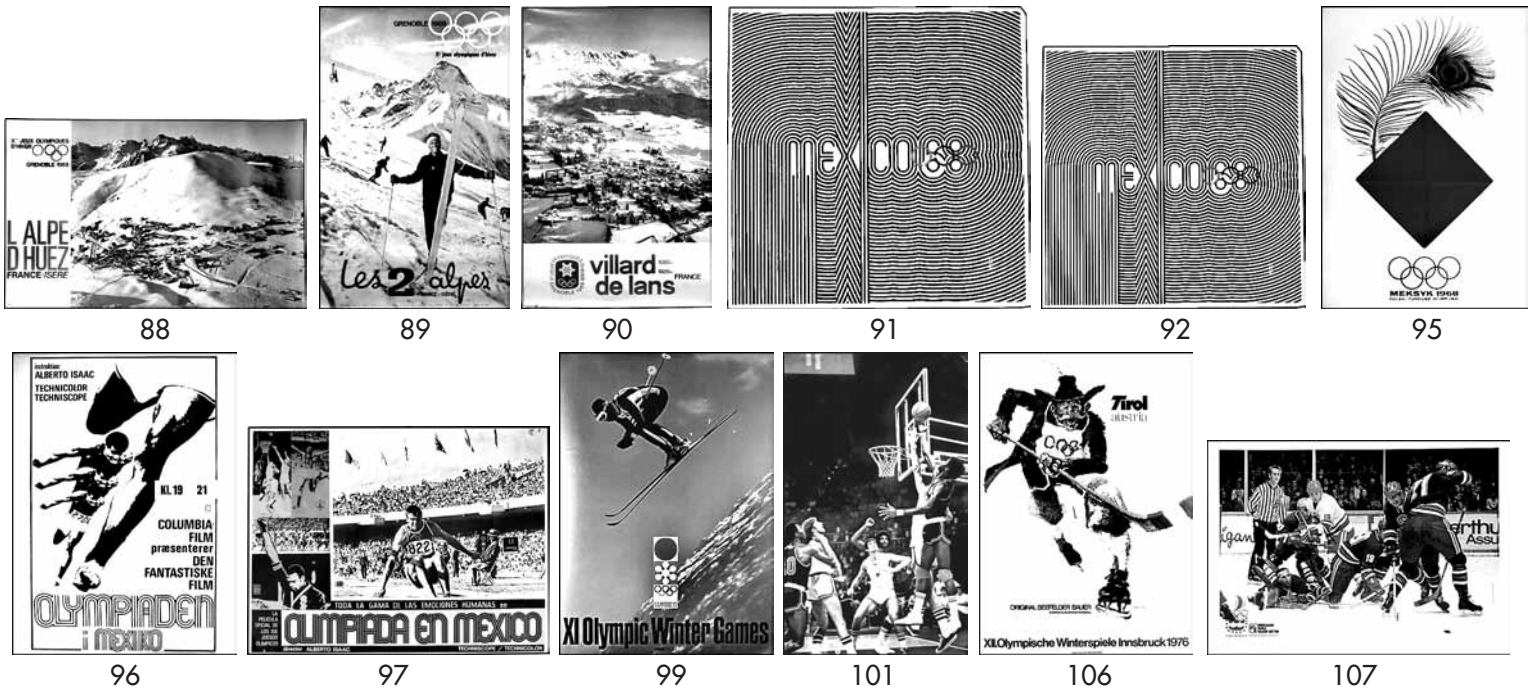


80



83

- c64. **Antwerp 1920. Official Discus Thrower Poster.** Lithograph, 62x88.5cm (24.4"x34.8"), designed by M. van Kuyck and W. v.d. Ven, printed by J.E. Goossens, Brussels, published by Belgian Railways. Discus thrower within flags of participating nations, Antwerp in background. Lt. marginal browning, o.w. EF, lined on linen. Bright colors, beautiful poster. **(\$3,250)**
- c65. **Antwerp 1920. Official Poster for Display in Streetcars.** Lithography, 30.5x20.5cm (12"x8.1"), designed by Martha van Kuyck, and Walter von der Ven, printed by La Lithographie Artistique, Brussels. Discus thrower under flags of participating nations, port of Antwerp in background. EF, lined on linen. **(\$750)**
- c66. **Paris 1924. Official Javelin Poster.** Lithograph, 120x80cm (47.2"x31.5"), designed by Orsi, printed by Machar et Co., Paris. Large javelin thrower in front of globe, Paris skyline in background, "VIIe OLYMPIADE-JEUX OLYMPIQUES". Bright colors, creases, sm. tears, VF-EF, lined on linen. **(\$4,500)**
- c67. **Lake Placid 1932 Winter. Official Ski Jumper Poster.** Multicolor lithograph, 101.5x63.5cm (40"x25"), by Witold Gordon. Ski jumper over North American continent with Lake Placid, rings and legend below. Olympism p. 43. Professionally repaired and lined on linen, VF-EF. *Rare poster by a famous artist.* **(\$4,250)**
- c68. **Lake Placid 1932 Winter. Official Bobsled Poster.** Blue and gold, 101.5x63.5cm (40"x25"). Four-man bobsled team between Olympic Games legend, four illustrations of different Olympic Winter events at l. VF-EF, professionally lined on linen. **(\$2,250)**
- c69. **Berlin 1936. Official Poster in English Language.** Designed by Frantz Würbel, Berlin. Multicolor offset printing, 63x101cm (24.8"x39.8"), published by the Publicity Committee for the Olympic Games. Olympic champion over quadriga on Brandenburg Gate. Olympism p. 45. Bright colors, minor tears professionally repaired. EF, lined on linen. **(\$3,500)**
- c70. **Berlin 1936. Official Brandenburg Gate Quadriga Olympic Games Poster.** Green and orange offset printing, 62.7x101.1cm (24.7"x39.8"), designed by Friedel Dzubas and Krauss. Quadriga on top of the Brandenburg Gate in Berlin, between Olympic legend. Olympism p. 47. Lt. creases, abt. EF, lined on linen. Very scarce. **(\$2,000)**
- c71. **Berlin 1936. Very Large Olympic Summer in Munich Poster.** For the Equestrian Race "Braunes Band von Deutschland", July 26, 1936 and the Chess Olympiad, 1936, August 16 through September 3, 1936. 85x121cm (33.5"x47.6"), designed by Ehrenberger, München, in German language. Silver design on blue background featuring Diana, Goddess of Hunting; 5 jockeys on horseback, and Munich skyline in background. EF, professionally lined on linen. Rare. Beautiful poster. **(\$2,500)**
72. **Berlin 1936. Olympic Stadium and Reichssportfeld Photographic Poster.** Black and white stiff paper, 90.5x63cm (95.6"x24.8"), photo by M. Zeno Diener, offset printing by Fricke & Co., Stuttgart. View of Olympic venues, with explanatory text in German below. Creases, tears, soiling, and tack holes in corners, VF. Rare. **(\$850)**
- c73. **Helsinki 1940. Official Poster in Swedish Language.** Multicolor lithograph, 69.7x104.3cm (27.4"x41.1"), designed by Ilmari Sysimetto, printed by Tilgman. Large figure of Paavo Nurmi, globe with Finland and Helsinki in back. Olympism p. 50/51. *Sysimetto's 1940 poster became the official poster for Helsinki 1952.* Two professionally repaired tears at top, abt. EF, professionally lined on linen. **(\$2,500)**
- c74. **Helsinki 1940. Official Poster in French Language.** Multicolor lithograph, 25.5x38.9cm (10"x15.3") designed by Ilmari Sysimetto, printed by Tilgman. Large figure of Paavo Nurmi, globe with Finland and Helsinki in back. Olympism p. 50/51. *Sysimetto's 1940 poster became the official poster for Helsinki 1952.* EF, professionally lined on linen. **(\$900)**
- c75. **St. Moritz 1948 Winter. St. Moritz Logo Official Olympic Poster.** Multicolor lithograph, 63.5x102cm (25.4"x40.2"), designed by Werner Weiskönig, printed by Art Institute Orell Füssli AG, Zürich. Large smiling sun, logo of St. Moritz, over Alpine landscape, "Olympische Winterspiele 1948". Olympism p. 57. Sm. tack holes in corners and at top, a few marginal tears, lt. creases, abt. EF. **(\$1,750)**
76. **London 1948. Ovomaltine-Bilderdienst. Olympic Winners in London Poster.** Black, white and red, German legend, 49x70cm (18.9"x27.6"), printed by H. Börsigs Erben, Zürich. Opening ceremony and winners incl. Fanny Blankers-Koen. Lt. marginal creases, VF-EF. **(\$200)**
- c77. **Helsinki 1952. Olympic Games in Helsinki Swedish Film Poster.** Red and yellow, 32x70cm (12.6"x27.6"), printed by Ewes, Stockholm. Five photographic events between legend in Swedish language. Lt. creases, o.w. EF. **(\$150)**
- c78. **Stockholm 1956 Equestrian Olympic Games. Official Poster in French Language.** Multicolor, 69.7x101.7cm (27.4"x40"), designed by John Sjösvärd, printed by Essete, Stockholm. Ancient Greek equestrian pictured after the Elgin Marbles of the Acropolis in Athens, over French legend and color rings. Olympism p. 67. Creased, abt. EF, lined on linen. **(\$2,000)**
79. **Squaw Valley Winter 1960. Official Flag Poster in German Language.** 61.9cm (24"x35.8"). Map of the United States with Squaw Valley, date below. Olympism. p. 77. EF, professionally lined on linen. **(\$675)**
80. **Rome 1960. Official Poster in Japanese Language.** Brown and gold, 70x99.5cm (27.5"x39.2"), designed by A. Testa, printed by I.G.A.P., Milan and Rome. The Roman she-wolf on column featuring a victorious Roman athlete crowning himself. Olympism pp. 72/73. Abt. EF, lt. creases and sm. tears professionally repaired, professionally lined on linen. **(\$650)**
- c81. **Tokyo 1964. Official Logo Poster.** Red and gold, 55x101cm (21.7"x39.8"), designed by Yusaku Kamekura, offset printing. Japanese rising sun over Olympic rings and "TOKYO 1964". Olympism p. 79. EF. **(\$1,250)**
- c82. **Tokyo 1964. Official Torchrunner Poster.** Multicolor, 72.3x105cm (28.5"x41.3") by Y. Kamekura and O. Hayasaki. Torchrunner l. over logo and legend. Olympism p. 81. EF, professionally lined on linen. **(\$850)**
83. **Tokyo 1964. Official Swimmer Poster.** Multicolor, 72x101cm (28.3"x39.8"), designed by Y. Kamekura, J. Murakoshi and O. Hayasaki. Swimmer towards viewer, "Tokyo 1964" and Olympic rings below. Olympism p. 80/81. EF, professionally lined on linen. **(\$850)**
- c84. **Tokyo 1964. Mount Fuji Poster.** Multicolor, 50.2x73.3cm (20"x28.9"), by Tokyo Metropolitan Government. "TOKYO 1964" and Olympic rings over Japanese landscape with Mount Fuji. EF, tack holes in upper corners, professionally mounted on linen. Scarce. **(\$675)**



- c85. **Tokyo 1964. Tokyo Olympic Games Belgian Film Poster by Metropolitan Film in Eastman Color.** Multicolor, 53.5x36cm (21.1"x14.2"), in French and Dutch languages, printed by J. Lichterta Fils, Brussels. View of opening ceremony within 5 rings, first torchbearer in Olympia at r. Tape spots, creased, VF-EF. **(\$375)**
- c86. **Grenoble 1968 Winter. Official Olympic Rings Poster.** 62x96cm (24.4"x37.8") designed by Jean Brian, printed by Imprimerie Generale, Grenoble. 5 rings racing down a mountain, 5-line legend and Grenoble Olympic logo at l. Olympism p. 92. Lt. creases, lt. browning. VF-EF. **(\$200)**
- c87. **Grenoble 1968 Winter. Official Olympic Logo Poster.** Blue and red, 31.5x51.5cm (12.4"x20.3"), designed by Roger Excoffon, printed by Dardelet, Grenoble. Olympism p. 95. A few sm. tears o.w. EF. **(\$150)**
88. **Grenoble 1968 Winter. Alpe d'Huez Poster.** Multicolor, 98.7x61.5cm (38.9"x24.2"), designed by A. Perceval. Aerial view of Bobsleigh venue Alpe d'Huez. Olympism unlisted. Lt. creases, o.w. EF. **(\$175)**
89. **Grenoble 1968 Winter. Les Deux Alpes Skiing Poster.** Multicolor, 61.5x98.7cm (24.2"x38.9"), designed by A. Perceval. Smiling skiers before Alpine scene, Olympic rings and legend at upper r. Small tears and creases around margins, VF. **(\$175)**
90. **Grenoble 1968 Winter. Villard de Lans Poster.** Multicolor, 61.6x99.7cm (24.3"x39.3"), by Photopress. Aerial view of Villard de Lans, venue for Luge. Olympism p. 95. Lt. marginal creases, o.w. EF. **(\$175)**
91. **Mexico City 1968. Official Logo Poster.** Black design with pink Olympic rings, 65.5x65.5cm (25.8"x25.8"), designed by Vazanez, Terrazas and Wyman, printed by M. Galas S.A., Mexico. B&W design with logo in center, rings in pink color, recalls the motifs of the Huichol Indians. Olympism p. 85. Abt. EF. Very scarce. **(\$500)**
92. **Mexico City 1968. Official Logo Poster.** As preceding poster, but 28x28cm (11"x11"). EF. **(\$150)**
- c93. **Mexico City 1968. Mexico Host to the World for the Olympics 1968 Travel Poster.** Multicolor, 58.7x90.8cm (23.1"x35.8"). Mexican lady with flowers for every day of the year, logo at lower r. Abt. EF, professionally lined on linen. **(\$300)**
- c94. **Mexico City 1968. Aztec Calendar Poster.** Purple and turquoise, 62x120.9cm (24.4"x47.6"), designed by Vazanez, Terrazas and Wyman, printed by M. Galas S.A., Mexico. Large Aztec calendar between rings and legend. *The poster was made in different colors.* EF. **(\$375)**
95. **Mexico City 1968. Official Polish NOC Poster.** Multicolor, 65x100cm (25"x39"), by Z. Waszewski. Peacock feather over red square, Olympic rings and legend below. EF. Very scarce. **(\$350)**
96. **Mexico City 1968. Swedish Official Olympic Film Poster.** Green and black, 62x85cm (24.4"x33.5"), by Parrot Litho. Large runners between legend in Swedish. Creases, VF-EF. **(\$200)**
97. **Mexico City 1968. Official Mexico 1968 Olympic Film Directed by Alberto Isaac Poster.** Lobby card, multicolor, 42.1x31.8cm (16.6"x12.5"). Soviet long jump, basketball, U.S. sprint and Black Power Salute by Tommie Smith. Pinholes in corners, o.w. EF. **(\$125)**
- c98. **Sapporo 1972 Winter. Official Logo Poster.** Offset color lithograph, designed by T. Kono, printed by Toppan Printing Co. Official logo over Mount Fuji. Olympism p. 105. EF. **(\$375)**
99. **Sapporo 1972 Winter. Official Ski Jump Poster.** Offset multicolor lithograph, 72x102cm (28.3"x40.1"), designed by Y. Kamekura, photo by N. Fujikawa, printed by Toppan Printing Co. Ski jumper over mountain and logo. Olympism p. 107. EF. **(\$375)**
- c100. **Munich 1972. Official Poster with Olympic Tower and Stadium.** Multicolor, 59.2x84cm (23.3"x33.1"), designed by O.H. Aicher, printed by Mandruck, Munich. Tent-shaped roof of Olympic stadium and Olympic tower, logo at top. Olympism p. 97. EF. **(\$175)**
101. **Munich 1972. Basketball USA - Italy Match Poster.** Multicolor, 59x95cm (23.2"x39.4"), Schwabing Poster, Nr. 40, Foto: Olympia Farbpool-Gaebele. Tear at upper right corner, o.w. EF. **(\$125)**
- c102. **Munich 1972. Roof of the Olympic Stadium Poster.** Black, blue and silver, 59.1x83.7cm (23.2"x33"), by Gerd Winner. View of Olympic roof, logo in upper r. EF. **(\$150)**
- c103. **Munich 1972. Art Poster by David Hockney.** Color lithography, 64x102cm (25.2"x40.2"). Olympic diver reaching water. EF. **(\$200)**
- c104. **Munich 1972. Hundertwasser Art Poster.** Multicolor, 63.5x101.6cm (25"x40"). Colorful design by famous artist Hundertwasser. Marginal creases, sm. tears. **(\$150)**
- c105. **Innsbruck 1976 Winter. Official Logo Poster.** Multicolor, 58.2x82.6cm (23"x32.5"), designed by A. Zelger, printed by Alpina Offset. Official logo design. Olympism p. 117. Tear at top, o.w. EF. **(\$450)**
106. **Innsbruck 1976 Winter. Original Seefeld Farmer as Hockey Player.** Offset color lithograph, 84x59.7cm (33.1"x23.5"), designed by W. Poetsch, printed by Sochor. Olympism unlisted. *Distributed in Seefeld for the Ice Hockey events.* EF. **(\$150)**
107. **Innsbruck 1976 Winter. Photographic Ice Hockey Poster.** Multicolor, 90.2x63.5cm (35.5"x25"), by Creativstudio, photo by Bruell/Schuster. Ice hockey play scene, logo at lower l. EF. **(\$125)**

Please Bid Early!