



200



203



205



206



208



204



209



210



214



213

212



211



215

200. **Press Badge.** Bronze, 41x45mm. EF, no ribbon. (\$225)

c201. **Official Blue Management Badge.** Blue bakelite with silver inlay, 68mm. Official logo over numbered inserted bar. EF. (\$325)

c202. **Official Olympic Star Flight to Olympiad in Berlin 1936 Badge.** Presented by Reichsport Leader von Tschammer to participants. Mother of pearl, 49x34mm. Three affixed silver airplanes flying towards color rings between Olympic legend. Mother of pearl seems like clouds. *Only 54 planes completed the flight to Berlin Olympiad.* EF. (\$750)

203. **Olympic Champion in Previous Olympic Games Badge.** Silvered, multicolor enamel, 27x33mm. Winning athlete with wreath over color rings, Brandenburg Gate in back, 2 white bars below for name. *Worn by former Olympic winners during 1936 Games.* EF, toned. (\$300)

204. **1936 American Olympic Team Badge.** White silk with blue legend, 5.1x12.9cm (2"x5.1"). Numbered. Security pin on back. Sm. brown spots, o.w. EF. Rare. (\$300)

205. **Czech Team Pin.** Bronze, 39x21mm, Czech flag enameled in blue-white-red. Eagle with Czech flag over scroll with Olympic legend and Olympic rings. EF. (\$125)

206. **Norwegian Team Pin for Garmisch-Partenkirchen and Berlin 1936.** Goldplated, 12x20mm, by H. Holmsen, Oslo. Winner with laurel wreath and Norwegian flag, "NORGE OLYMPIADEN 1936" below. VF-EF. (\$175)

c207. **Official Presentation Book Set of 6 Plaques. Illustrating Events of the Six Days of Ancient Olympic Games, from Greek Vases.** Cast bronze, each 92x113mm, with frame 130x152mm. **1st Day:** Opening of the Games; **2nd Day:** Competitions of Young Boys; **3rd Day:** Competitions of Men; **4th Day:** Rest; **5th Day:** Main Competitions; **6th Day:** Winners Ceremony and Banquet. Attractive and scarce set housed in book-like case, spine with gilt text. EF. (\$1,250)

208. **Berlin Bear Celebrates the Olympic Games 1936 Plaque.** Cast blackened iron, 21.1x14.7cm (8.3"x5.8"), by Krückeberg. Berlin bear led by cherub with banner with Olympic rings and "Zur Erinnerung an Olympia Berlin 1936". (In commemoration of the Olympiad Berlin 1936, transl. from German.) Two cherubs holding oak garland draped around bear. EF. Rare. (\$450)

209. **Commemorative Olympic Stadium Meissen Porcelain Medal.** Brown ceramic, 11.5cm (4.5"), made in Meissen. Aerial view of Olympic Stadium and Reichsportfeld. Rev. Large Olympic bell. EF. (\$300)

210. **Cased Official Italian Olympic Committee Olympic Silver Medal Winner Award Medal (ca. 1936).** Silver, 50mm. Raised helmeted bust half l. of Mussolini, fasces below. Rev. Victory with winner giving salute, Olympic rings with fasces at l. Art Deco style. Toned EF, in blue presentation case with gilt CONI logo on top. Rare. (\$650)

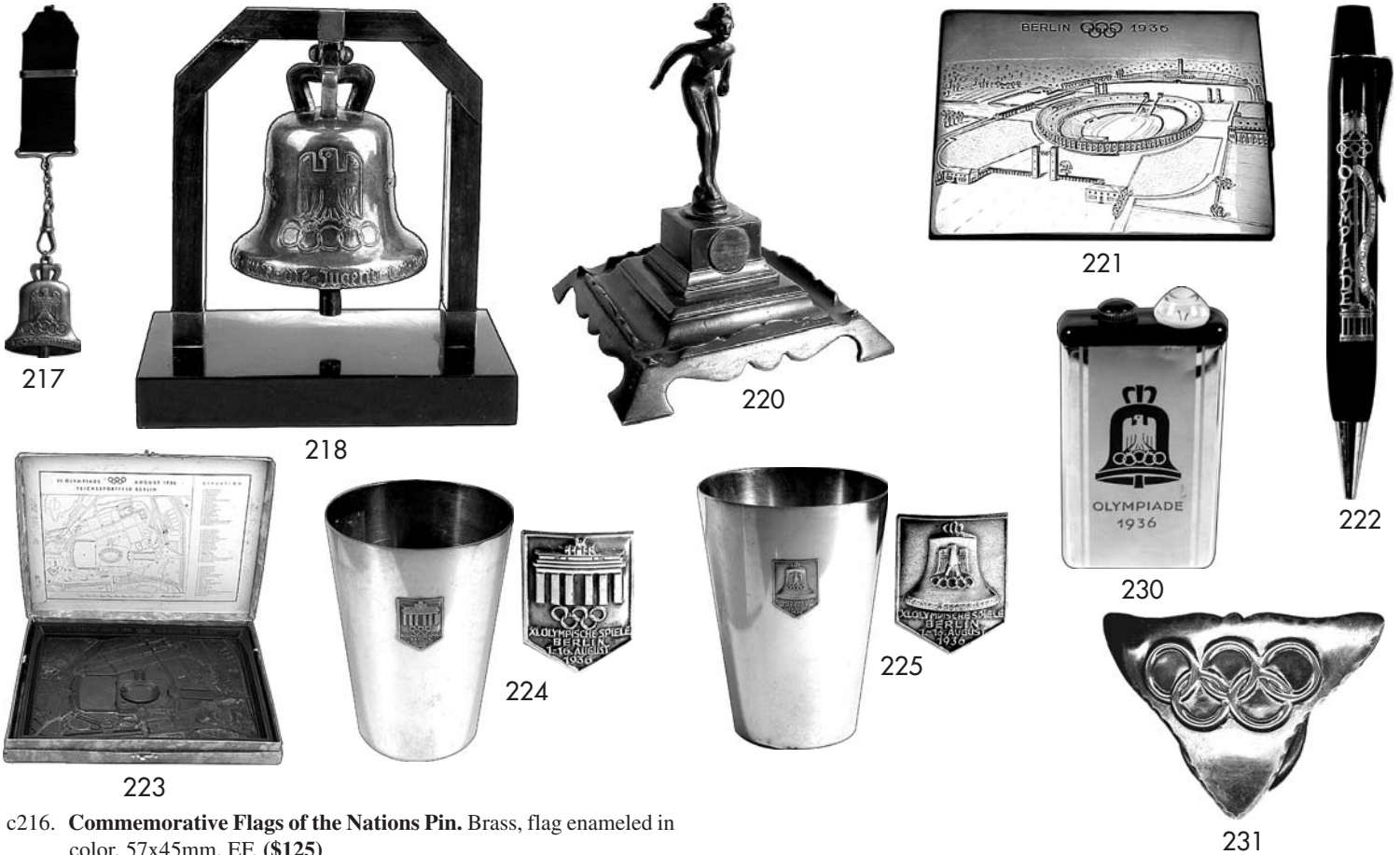
211. **First Prize Shooting Medal, 1936.** Silver, 40mm. Olympic rings within laurel sprig flanked by "Olympia Commemorative Medal 1936" (transl.). Rev. Laurel and oak branch above 3-line engraved legend. Toned EF, with loop and ring. (\$175)

212. **Prize Medal of the Berlin Electricity Company (1936).** Bronzed aluminum, 35mm, by Schmidt. German eagle holding Olympic rings. Rev. 4-line legend. VF-EF, spotty on rev. (\$125)

213. **Commemorative XIth Olympiad Box Medal, 1936.** Brass, 58mm, made by Merz. Olympic bell. Rev. Quadriga within Olympic legend. Contains 10 round b&w photos of Olympic venues, text on back in German, English and French. EF, in original paper box. (\$225)

214. **Commemorative Olympic Bell Pin.** Silvered, 22x24mm. Toned EF. (\$125)

215. **Commemorative Olympic Rings Pin.** Silvered, 44x23mm. Olympic rings affixed in color. VF-EF. (\$140)



- c216. **Commemorative Flags of the Nations Pin.** Brass, flag enameled in color, 57x45mm. EF. **(\$125)**
217. **Commemorative Olympic Bell Watch Fob.** Silvered, 31x40mm. Olympic bell over 1936 motto "I call the youth of the world". Rev. 4-line Olympic legend. Toned EF, with black ribbon. **(\$175)**
218. **Official Presentation Silver Olympic Bell on Bell Tower.** Bell silvered, 11.5cm (4.5") high, 10cm (3.9") wide. German eagle holding Olympic rings, "1936" and Brandenburg Gate in Berlin on sides, "I call the Youth of the World" and "II. Olympische Spiele Berlin" around bottom. With clapper. On blackened wooden stand, bell tower mounted on black marble base, 18.5x11cm (7.3"x4.3"). Overall 20cm (7.9") tall. Bell toned EF. *Very impressive and rare bell.* **(\$2,500)**
- c219. **Official German Reich Presentation Cup.** Amber-colored lead crystal, 13.2cm (5.2") tall, 7.9cm (3.1") diameter. German Reich eagle holding Olympic rings dividing 3-line legend "Deutsches Reich/XI. Olympische spiele/Berlin 1936". (Translated "German Reich/XIth Olympic Games/ Berlin 1936"), large view of Berlin Brandenburg Gate below. Skilled engraving. EF. Rare. **(\$975)**
220. **Ladies' United Kingdom Swimming Team Presentation Sculpture, Berlin 1936.** Cast bronze, 16x15.8cm (6.3"x6.2"), 20.2cm (8") tall. Female swimmer about to jump into the water, standing on top of a pedestal, medallion on front "Ladies UK Team 1936" and Olympic rings. EF. **(\$750)**
221. **Commemorative Silver Cigarette Case with View of Olympic Stadium, Berlin 1936.** Hallmarked silver, 10.2x7.6cm (4"x3"). Finely engraved aerial view of Olympic stadium, Olympic rings dividing "Berlin 1936" at top. EF. **(\$500)**
222. **Commemorative Silver-Inlaid Pencil.** 10.7cm long. Black with silver-inlaid "OLYMPIADE BERLIN 1936" between German Reich eagle holding Olympic rings and Brandenburg Gate. EF. **(\$200)**
223. **Bakelite Model of the Reichsportfeld with Olympic Stadium.** Dark gray bakelite, 29.7x21.8cm (11.7"x8.6"), designed by Oskar Reich, made by Siemens-Schuckertwerke, both Berlin. Three-dimensional view of Olympic 1936 games site, legend at top. EF. In original case, explanatory map on inside top, scuffed, lt. soiling, Tournament of Roses 1936 label on top. Scarce. **(\$450)**

224. **Commemorative Official Logo Cup.** Silvered, 10.5cm (4.1"), made by WMF (Württemberg Metalware Company). Official logo on front: Brandenburg Gate over Olympic rings and 4-line legend "XI. OLYMPISCHE SPIELE/BERLIN/1.-16.AUGUST/1936". EF. **(\$175)**
225. **Commemorative Olympic Bell Cup.** Silvered, 10.5cm (4.1"), made by WMF (Württemberg Metalware Company) Olympic bell over 4-line legend "XI OLYMPISCHE SPIELE/BERLIN/1.-16. AUGUST/1936". EF. **(\$175)**
- c226. **Commemorative Porcelain Coffee Cup, Saucer and Cake Plate Set.** Cup 11.8cm (4.6"), and cake plate 19cm (7.5") wide, both decorated with handpainted helmeted and crowned Berlin shield and large color Olympic rings. Edges gilt on all three. EF. (3 pcs.) **(\$275)**
- c227. **Commemorative Handpainted Ornate Porcelain Cup and Saucer.** Hutschenreuther, Selb manufactory. Cup 45mm high, 92mm wide, with helmeted color Berlin coat of arms and XI Olympiad legend, and Olympic color rings, painted on inside. Saucer 118mm, scalloped design. All edges and handle goldplated. EF. (2 pcs.) Attractive. **(\$225)**
- c228. **Commemorative Porcelain Cup.** 92mm wide, 45mm tall, handpainted, by Geyersthal Manufactory. Red and black Berlin coat of arms and color Olympic rings inside. Scalloped edge. EF. **(\$175)**
- c229. **Commemorative Porcelain Box with Lid.** White porcelain, 8.1x8.1cm (3.2"x3.2"), 5.1cm (2") tall, makers mark crowned initials "PMR" in gold on back. Gray-black Brandenburg Gate with large color rings over "OLYMPIADE 1936". EF. **(\$225)**
230. **Commemorative Olympic Bell Pocket Flashlight.** Silvered, 32x60mm. Black Olympic bell with rings over "Olympiade 1936". EF. **(\$175)**
231. **Olympic Scarf Holder.** Silverplated, triangular, 55x38mm. Large Olympic rings, hammered edge. Toned EF. **(\$150)**
- c232. **Official American Team Wool Vest with Patch.** With label by McGregor, officially approved by the American Olympic Clothing Committee and Olympic rings. Multicolor silk team patch on front. A few moth holes, VF. Rare. **(\$375)**



234



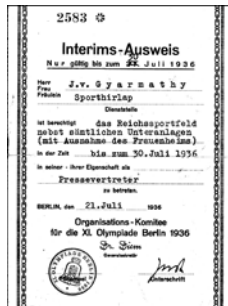
237



239



240



241



241a



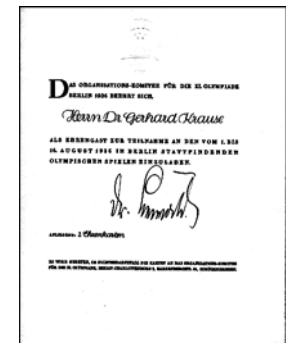
242



242a



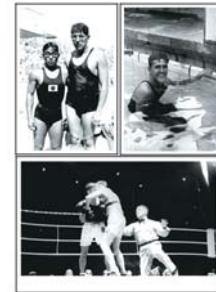
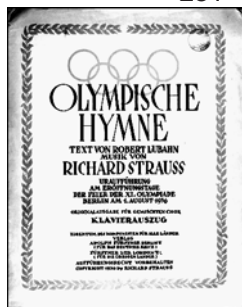
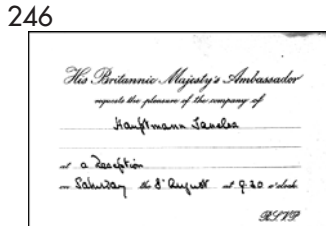
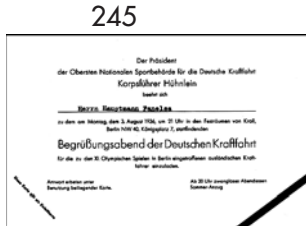
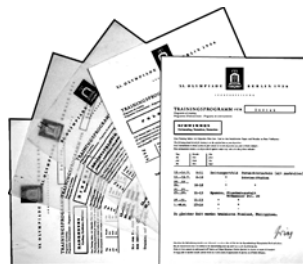
243



244

- c233. **Large Commemorative Tapestry of the Berlin Olympic Games, 1936.** Multicolor, woven, 180x77cm (70.9"x30.3"). View of Berlin Cathedral and Castle, Spree river in foreground, "Olympische Spiele 1936/Berlin" legend, wool tassels at bottom. EF. (\$1,500)
- 234. **White Lace Doily Featuring Reichstagsgebäude in Berlin.** 15.6cm (6.1"). Rings and Olympic legend over seat of government in ornate flower border. EF. Very attractive. (\$175)
- c235. **German Olympics 1934-1936 Ribbon.** Red, embroidered in black and white, 37x93mm (1.5"x3.7"). German eagle holding Olympic rings, between legend. EF. (\$100)
- c236. **Beautiful Commemorative Olympiad Berlin 1936 Table Lamp with Handpainted Lamp Shade.** Brass, 52cm (18.5") tall and wide. Three-dimensional athlete on column, his left foot on podium, tying his shoe, "OLYMPIADE BERLIN 1936" in raised letters on base. 6-sided shade in translucent parchment, each part of the shade with oil painting of pansies. Beautiful lamp. EF. Rare. (\$1,500)
- 237. **Olympic Bell over Berlin Olympic Stadium Original Copper Etching,** signed by artist in pencil. Large Olympic bell over Olympic stadium and Reich Sport field. EF. Framed. (\$300)
- c238. **Specimen Album of All Tickets, Identity Cards, Passes and Badges.** 46 stock paper pages, 30x33cm (11.8"x13"), published by the Organising Committee. 103 different actual tickets: honorary, press, radio, all events, booklet covers, season tickets, etc.: 24 different identity cards; color plate of all badges, with explanatory text page; 14 photos of high ranking dignitaries, and parking map. Actual paper items, all pasted in album. Extremely rare. (\$9,750)
- 239. **Program. Fencing, August 2-15, 1936.** 40pp., 15x21.9cm (5.9"x8.6"), in German. Complete fencing program by day, space for results (some are penciled in), lists all participants, etc. *Very rare program.* VF-EF. (\$250)
- 240. **Program. Segel-Wettfahrten. Yachting, August 4-14, Kiel.** 57pp. 15.1x21.9cm (6"x8.6"), in German. Complete yachting program with all participants and yachts, 4 color pages in center featuring flags of participating nations, signals for boats and signals on sea. Crease and tear on cover, contents EF. Very rare. (\$300)

- 241. **Official Preliminary Identity Card for a Hungarian Press Member to Visit the Olympic Stadium July 21 to 30, 1936.** 11.1x15cm (4.4"x5.9"). Fold in center, tears at sides, VF-EF. Scarce. (\$200)
- 241a. **Official Identity Card for a Member of the Hungarian Press.** 9x15cm (3.5"x5.9"). Issued by Hungarian NOC. With photo. VF-EF, corner crease, a few brown spots. (\$250)
- 242. **Press Season Ticket for all Events in the Olympic Stadium, August 1-16, 1936.** Blue, ocher and gray, 15.1x9cm (5.9"x3.5"). Valid only in connection with identity card. Sm. crease upper r. corner, EF. Scarce. (\$400)
- 242a. **Full Ticket for Participants. Cycling, August 8, 1936, 18.00 Uhr, B.S.C. Stadion, Price RM 3.-.** 13.2x6cm (5.2"x2.4"). 1000-Meter Time Trial (won by v. Vliet, Holland); 4000-Meter Team Pursuit and Team Time Trial (both won by French team), 2000-Meter Tandem (won by German Team). EF. Scarce. (\$175)
- 243. **(Autograph) Group of Seven Official Letters to a Judge at the Marathon Event.** Includes 6 letters, one signed in ink by Ritter Von Halt, on official Organising Committee Stationary and one from German Track & Field Federation. All creased, VF to VF-EF. Scarce group. (7 pcs.) (\$400)
- 244. **(Lewald Autograph) Official Invitation for the Head of the Olympic Press Committee, Dr. Gerhard Krause,** to participate as Honored Guest in the Olympic Games 1936. 4pp., 29x23cm (11.4"x9.1"). Embossed Olympic rings on cover, embossed bell above invitation text, **signed in ink by Dr. Lewald, president of the Organising Committee.** With hand addressed envelope with embossed Olympic rings. EF, tear at r. top of envelope, lt. browning. (\$300)



245

254

255

256

257

- 245. **(Organising Committee Flyer). Gymnastics Demonstration Instructions for August 9, 1936, Marathon Day, Olympia Stadium.** 4pp., 14.9x20.9cm (5.9"x8.2"). Crease, last page soiled, VF. **(\$100)**
- 246. **Official Organising Committee Pass to Welcome the Indian Olympic Athletics, Wrestling, and Hockey Teams on their Arrival at the Berlin Train Station.** Red and black, 21x29.7cm (8.3"x11.7"). Afterwards, transport to the Olympic Village and Welcome in Village. Lt. browning, creased, VF+. Rare document. **(\$175)**
- 247. **Group of Five Training Schedules for the Indian Team in Swimming, Polo, Track & Field, Wrestling, and Cycling.** 19.9x29.6cm (7.8"x11.7"). VF-EF to EF, impression of paper clip at top. (5 pcs.) **(\$250)**
- 248. **Pair of Invitations to the Opening Night of the "Frankenburger Würfelspiel" Play, and Program, Friedrich-Eckart-Open Air Stage, August 2, 1936.** Stiff paper, 22x15cm (8.7"x5.9"). Plus 3-page ticket delivery card and program to the play. EF. (4 pcs.) **(\$175)**
- 249. **Invitation of the National Commission for German Auto Sport to a Welcome Evening at Famous Kroll's Restaurant, August 3, 1936, 21 Uhr for the Foreign Participants of the Olympic Auto Rally.** Invitation serves as entry ticket. 19.4x12.4cm (7.6"x4.9"). EF, in envelope mailed on July 25. (2 pcs.) Scarce. **(\$75)**
- 250. **Invitation to the Olympic Reception of the British Ambassador, August 8, 1936, at 9:30 o'clock.** Stiff paper, 15.6x10.3cm (6.1"x4.1"). EF. With envelope mailed on July 29. Plus newspaper clipping about the reception. (3 pcs.) **(\$100)**
- 251. **(Poster) "Welcome to the Olympic Village!"** Text in Arabic. By Reich Minister of War v. Blomberg and Organising Committee President Dr. Lewald. Gray, 22x33cm (9.7"x13"). Gold laurel branch and color Olympic rings above aerial view of Olympic Village, welcome text below. Lt. corner creases, abt. EF. Scarce. **(\$200)**

- 252. **Group of 3 Speeches Held at the Inauguration of the Olympic Art Exhibit, Berlin 1936 on July 31st, 1936.** Each 22.8x31.6cm (9"x12.4"), in German, English and French language. Reich Minister Dr. Goebbels (9pp.), IOC President Baillet-Latour (3pp.) and Organising Committee President Dr. Th. Lewald (3 pcs.) All in Inauguration of the Olympic Art Exhibition Folder, It. scuffing and browning, speeches EF. (4 pcs.) Rare. **(\$300)**
- 253. **Chart of Participation in Olympic Games 1936 Berlin as of July 4, 1936.** 49.9x60.8cm (19.7"x23.9"). List by country and number of entrants in each sport, Indian team marked in red. Creased, tack holes in corners, o.w. EF. **(\$100)**
- 254. **Olympic Champions 1936-Wampole's Creoterpin Cold Medicine Ink Blotter.** Multicolor, 16x9cm (6.3"x3.5"). Jesse Owens (400-Meter Relay), Glenn Hardin (400-Meter Hurdles), Rita Mastenbroek (100-Meter Freestyle); G. Stoeck (Javelin), etc. Abt. EF. **(\$50)**
- 255. **Sheet Music. Olympische Hymne. The Olympic Hymn, in German.** Text by R. Lubahn, Music by Richard Strauss. First playing at the Opening Ceremony, August 1, 1936. 9pp., 27x34cm (10.6"x13.4"). *The IOC decided to make this hymn the permanent Olympic hymn, but it was played only in Berlin 1936. Various hymns were played between 1948 and 1956, and in 1958 the IOC restored the original Greek Olympic hymn of 1896 (see lot 41) as the permanent Olympic Hymn.* Corners chipped at top, a few sm. marginal tears, VF-EF. **(\$250)**
- 256. **(Photos) Group of 66 Large Size Black and White Original Photos "Bildschau vom Tage" Press Photos.** 24.6x18.1cm (9.7"x3.2"), captions in German. Torch Relay, Opening Ceremony, Hitler Greets Nation at Opening Ceremony, Gymnastics, Swimming, Track & Field, Hockey, Marathon winner, Jesse Owens, closing ceremony, etc. VF-EF to EF. (66 pcs.) **(\$850)**
- 257. **(Photos) Group of 25 Black and White Original Press Photos with Captions in German Attached on Back.** 18.2x13cm (7.2"). Includes Boxing, Swimming (U.S. gold medal winner Kiefer), Rowing, Gymnastics, Water Polo, etc. Almost all EF. (25 pcs.) **(\$300)**